

NHSGGC Compression Therapy Formulary: Hosiery, Wrap & Bandages Primary Care & Acute

Important: Only the version of this document available from [GGC Medicines](#) is maintained. Any printed copies should be viewed as 'uncontrolled' and may not necessarily contain the latest updates.

Date of Publication	October 2023
Author	Tricia McShane, Chair, Compression Therapy Implementation Group
Approval Group	Non Medicines Utilisation Sub Committee of ADTC

NHSGGC Compression Therapy Formulary		
Date of Publication	October 2023	

Contents	Page number
1. Introduction: inclusion/exclusion criteria	3
2. Accountability and Responsibility/Scope of Practice	4
3. Classification for Compression Hosiery	5-6
4. Formulary Preferred Choices	7-11
5. Product Descriptors	12-22
6. Appendices: 6.1. Immediate Care for Lower Limb Wounds 6.2. Implement Wound Hygiene 6.3. Allergens and Use of Compression Bandages 6.4. Treatment Pathway Overview/Leg Ulcer Treatment Algorithm 6.5. Care of patient admitted to hospital with leg ulceration.	23-27
7. Non Medicines Utilisation sub group: Compression Therapy Implementation Group Membership	28
8. Prescribing Codes for Product Ranges	29

1. INTRODUCTION

This formulary has been developed as a guide to aid Healthcare Professionals (HCP) in selecting the most appropriate products to use in practice for patients, with chronic venous insufficiency (CVI), who require management of chronic oedema and/or active venous leg ulceration.

It is estimated that patients with diagnosed venous leg ulcers account for 1:170 adults in the UK. ([Guest 2015](#)). This does not take into account those in the population who have not been diagnosed and are at risk of ulceration or those in remission (healed ulcers/controlled chronic oedema).

CVI is a life-long chronic condition with a significant impact on quality of life as well as considerable impact on health care resources. The cost of prescribing compression bandages and hosiery in NHS Scotland is £4m per annum. It is therefore essential that resources are used safely and cost effectively for the benefit of patients.

This latest formulary includes compression wraps and these will be considered first line alongside hosiery kits for the management of simple venous ulceration with the use of compression bandaging for the complex stages of venous ulcers and chronic oedema.

This formulary provides details on a range of product choices and additional clinical guidance to support HCP to provide safe, cost effective patient care. Products are all included on [Scottish Drug Tariff](#). Part 2 & 4.

Further information:

Vascular home page: available [HERE](#) , NHSGGC prescribing non medicines therapeutic formularies: available [HERE](#)

Inclusion criteria for product choices

- Management of patients with chronic venous insufficiency (prevention and treatment)
- Management of patient with venous ulcers
- Management of mixed aetiology leg ulcers (under specialist guidance)
- Management of patients with remission (healed leg ulcers and controlled oedema)

Exclusion criteria for formulary product choices (seek further specialist advice)

- Ankle brachial pressure index (ABPI) outside of 0.8 – 1.3 range
- Lymphoedema
- Arterial disease (ischaemia) according to vascular assessment
- Current acute inflammatory episode
- Acute deep vein thrombosis
- Patients with diabetes or rheumatoid arthritis, unless after specialist referral and under supervision, due to risk of microvascular disease
- Uncontrolled congestive heart failure (risk of cardiac overload)
- Sensory disorders of the limb i.e. peripheral neuropathy unless after specialist advice (caution)
- Known sensitivity to the fabric

2. ACCOUNTABILITY AND RESPONSIBILITY/SCOPE OF PRACTICE

It is the responsibility of the HCP to identify their learning needs and ensure competence to practice. Further support and information should be sought to ensure this.

All HCPs should refer to: [NMC](#) (nurses) and [HCPC](#) (Allied Health Professionals) Professional Codes; AHPs and Non-Medical Prescribers (V300 and V150) refer to [RPS A Competency Framework for all Prescribers](#) and [RPS Professional Guidance Expanding Prescribing Scope of Practice](#)

Compression therapy is the gold standard for prevention and treatment of chronic venous insufficiency and venous leg ulcers. Hosiery kits and compression wraps are considered first line management for Simple Venous Leg Ulcers.

Compression bandages will continue to be used for complex leg ulcers and management of chronic oedema.

Compression therapy should only be applied by those HCPs competent to do so, providing the most appropriate treatment which will deliver safe, effective, efficient, equitable and timely person centered care. HCPs that prescribe, or are influencing prescribing decisions on choice of products, should ensure that reasonable volumes are prescribed to reduce waste, minimise variations in practice and promote best practice. This should also facilitate positive patient engagement.

HCPs should ensure that competencies, in the management of patients with CVI and non-medical prescribing are included in their Personal Development Plan (PDP).

[Harding et al, 2015](#) recommended ongoing review and monitoring dependent on the wound history and patient's level of cardiovascular risk (e.g. every 12 months); ensure patients are aware of need to contact HCP for earlier reassessment if further trauma or changes to the lower leg occurs or they have concerns about circulation or increasing oedema

To ensure clear and comprehensive management plan assessment and ongoing care should be documented in NHSGGC Clinical Nursing Information System (CNIS) and Integrated Care Pathway leg ulcer pathway.

If there is absence of ulcer healing or signs of deterioration; vascular or specialist intervention may be considered appropriate.

Detailed discussion on the aetiology and pathophysiology of CVI is out with the scope of this formulary. However, some general guidance has been provided on assessment of patient to support best practice, refer to appendices.

3. CLASSIFICATION FOR COMPRESSION HOSIERY

Before prescribing compression garments, the class must be specified ([Wounds UK, 2015](#)). The compression classes relate to the millimeters of mercury (mmHg) of compression provided in the garment. The values of mmHg differ depending on where they are manufactured.

British Standard garments provide less compression than German RAL (often referred to as European standard) alternatives.

The table below highlights the different compression classifications and levels of compression:

	Class 1	Class 2	Class 3
British Standard	14-17 mmHg Light	8-24 mmHg moderate	25-35 mmHg firm
RAL/European Standard	18-21 mmHg moderate	23-32mmHg firm	34- 48 mmHg very firm

The compression class required is usually determined based on the severity of the patient’s symptoms, following a holistic assessment, inclusive of a vascular assessment and considerations of other comorbidities along with patient preferences and tolerances ([Harding 2015](#)),

British Standard Hosiery

British standard is highly elastic and therefore are not suitable for patients with moderate limb swelling/oedema but suitable for a ‘normal’ shaped leg, with little oedema. Three months manufacturer’s guarantee.

RAL/European Standard Hosiery

RAL garments are stiffer allowing for better management of oedema and have a manufacturer guarantee of six months.

More choices in sizes (extra wide calf sizes and shoe size available).

Often the choice of style depends on the individual need of the patient identified that. It is important to include patients in the decision-making process to ensure that the selected garments are deemed acceptable for patients’ daily activities to aid concordance.

Hosiery application can be difficult for some patients, however, to be most effective they need to be worn during the day and when patient is active. One of the biggest influencers on garment selection is whether patients can get the garment on or off or if there are carers/family members who can assist.

A degree of dexterity is required, provision of application aid may be of value (see [section 4.7](#)).

Types of Compression Hosiery:

Flat-Knit Compression Hosiery

Flat-knit garments are knitted flat on a machine, then sewn into a leg shape with a seam. This results in a stiffer garment, which is particularly helpful in patients with lymphoedema or chronic oedema, distorted limb shapes and deep skin folds, as the fabric is less pliable and is less likely to dig into skin folds or roll down causing damage to the skin ([Anderson and Smith, 2014](#)).

The garment lies over joints and oedematous areas instead of collecting in skin creases like a tourniquet. Suitable for patients with a high BMI. Can be applied over ulcers if exudate is fully contained in the dressing. Flat-knit is usually used for made-to-measure garments because it can be more readily adapted to limb shape distortion. ([Flat knit hosiery, 2019](#))

Circular-Knit Compression Hosiery

Circular-knit hosiery is knitted with a single weft thread on a cylinder producing a seamless stocking.

The fabric tends to be finer, and patients often find these garments cosmetically more acceptable to wear, which helps with concordance ([Richie, 2018](#)). The elastic nature of circular-knit garments means that the compression is at its highest at the narrowest part of the limb, which is usually at the ankle. This means that circular-knit hosiery can often be contraindicated for patients with misshapen limbs, or where the narrowed part of the limb is not the ankle.

Compression Wrap

Compression wrap is an adjustable compression garment with Velcro® brand fasteners. The fabric has short stretch properties, giving static stiffness indices similar to inelastic bandages. The straps have 50% overlap which prevents gapping and can accommodate changing limb circumference to contain and control oedema. [Wraps](#) can aid self-management, being readjusted by the patient or carer if they become loose.

4. FORMULARY PREFERRED CHOICES

Preferred product (PL) choices are suitable for the management of the **majority** of patients with chronic venous insufficiency and venous leg ulcers. **Choices for those with complex needs are included as total formulary (TF).**

4.1. Compression Wrap Preferred Choice (PL)

Aim: prevention and treatment of leg ulceration and CVI in the presence/absence of oedema.

Name of product: ReadyWrap™ Lohmann Rauscher (L&R)

Category Compression Wrap

(PL) ReadyWrap Calf piece: Colour: Beige or black	S, M, L, L, XL, XXL	£91.23 each	Length: 30cm, 35cm
(PL) ReadyWrap foot piece Colour: Beige or black	S, M, L, XL	£40.00 each	Regular or long

4.2. Hosiery Core Preferred Choices (PL)

Aim: prevention of leg ulceration and management of chronic oedema.

Suitable for patients in remission to prevent venous leg ulcer recurrence.

All hosiery choices are latex free

Cost per pair unless otherwise stated	Unit size	Length
Category 1: British Standard Short Stretch Hosiery Suitable for prevention of leg ulcers in absence of chronic oedema		
(PL) Duomed Soft® (Mediven) Colour: sand	S, M, L, XL, XXL Class 1 (14-17 mmHg) Class 2 (18-24 mmHg) Class 3 (25-35 mmHg) £7.58	Available below knee
Category 2: European/RAL Standard Hosiery: Circular Knit Suitable in presence of oedema/lymphoedema		
(TF) Mediven Plus® (Mediven)	Sizes I-VII Stock option Class 1 (18-21 mmHg) Class 2 (23-32 mmHg) Class 3 (34-46 mmHg) £28.53 - £31.83	Available in petite, standard and wide calf options
(TF) Mediven Plus® MTM circular knit	Made to measure option only Class 1 (18-21 mmHg) Class 2 (23-32 mmHg) Class 3 (34-46 mmHg) £30.69 - £33.70	Available in petite, standard and wide calf options
(P) Juzo Move®	Sizes I-VII Stock option Class 1 (18-21 mmHg) Class 2 (23-32 mmHg) Class 3 (34-46mmHg) £29.89	Available in normal, short, extra short lengths
Category 3: Hosiery Kit: British Standard. Suitable to treat "Simple" venous leg ulcers, in absence of oedema. Contain two liners and compression stocking		
(PL) Altipress 40® (Altimed Ltd) Kit	S, M, L, XL, XXL kit £14.50	Short, regular, long options
Category 4: Hosiery KIT: European/RAL Standard Suitable to treat "Simple" leg ulcers and oedema and misshapen limb		
(PL) Actilymph® (Lohmann & Rauscher) (L&R)	40mmHg kit £29.97	Standard length only

4.3. Hosiery Variances

Category 1: British Standard Hosiery Kit Liner Packs. Each liner provides 10mmHg at the ankle. Supplied in packs of three

Altipress®(Altimed Ltd) sizes S,M,L,XL,XXL Pack of 3 liners £11.46 per pack Available in short, regular and long lengths

Aim: to provide reduced compression in following circumstances:
 One liner can be used to deliver 10mmHg for patients who are waiting for full assessment and ABPI Doppler to exclude arterial disease
 Patients who cannot tolerate compression due to pain or other issues
 Patients who are unable to tolerate compression but may have liner layers added over time to build up compression to therapeutic levels
 Exclusion: Do not use with patients who have gross oedema, diabetes, signs of ischaemia or in your clinical judgement are not suitable.

MADE TO MEASURE CUSTOMISED HOSIERY

Aim: to provide therapeutic levels of compression for patients with misshapen, oedematous limbs whose measurements **do not** conform to standard hosiery.

Unit size.	Length	
Category 3: European/RAL Standard Hosiery: Flat Knit Class 1 – 3. Suitable in presence of oedema/lymphoedema and misshapen limb		
(TF) Mediven Mondri® (Mediven) Latex free	Class 1 (18-21mmHg)	£36.16
	Class 2 (23 -32mmHg)	£37.87
	Class 3 (34-46mmHg)	£42.43
(TF)Jobst Elvarex Custom® (BSN Medical) Contains latex	Class 1(18-21mmHg)	£36.97
	Class 2: (23-32mmHg)	£38.72
	Class 3: (34-46mmHg)	£42.17
(TF) Jobst Elvarex Soft Custom® (BSN Medical) Latex free	Class 1(18-21mmHg)	£35.73
	Class 2: (23-32mmHg)	£37.95
	Class 3: (34-46mmHg)	£40.56

4.4. Compression Bandages Core Preferred Choices:

Aim: Prevention and management of leg ulceration and uncontrolled chronic oedema in misshapen limbs, when hosiery not appropriate.

Most options are latex free.

***contains latex within bandage, with reduced risk of direct contact with skin.**

Category 1: Short Stretch Inelastic Bandages

Suitable for management of chronic oedema and treatment for venous leg ulcer Provides 40mmHg at ankle

(PL) Actico® (L & R) cohesive bandage* (requires Ksoft liner) Contains latex	10cm x 6m	£3.38	12cm x 6m	£3.34
(TF) Actico 2C Kit (L & R) short stretch Inelastic -no liner required Latex free	10cm x 6m	£8.03	10cm x 6m and 10cm x 9m	£9.04

Category 2: Multi-layer Elastic/Inelastic Kits

Aim: Management of chronic oedema and treatment for venous leg ulcer Provides 40mmHg at the ankle

(PL) Coban2® (3M) cohesive kit** (includes comfort layer bandage) latex free	10cm x 6m	£8.24
---	-----------	--------------

Category 3 :Two-layer reduced Elastic/Inelastic Bandage Kits* Provides 20mmHg-30mmHg at the ankle Suitable for patients who cannot tolerate full compression due to pain or underlying aetiology

(TF)Coban2 Lite® (3M)** includes comfort layer bandage Latex free	10cm x 6m	£8.24
--	-----------	--------------

4.5. Compression Bandage Variances

Aim: to manage patients with complex needs

Multi- layer 1: Sub compression wool layer is suitable to protect bony prominences and shape limb for graduated compression

(PL) KSoft® (Urgo)	10cm x 3.5 m 10 x 4.5	£0.49
--------------------	-----------------------	--------------

Multi- layer 2: Light support bandage (Type 2) suitable for use pre ABPI or for patients who do not tolerate compression.

(PL) KLite® (Urgo)	10cm x 3.5 m	£1.07
--------------------	--------------	--------------

Reduced compression bandages can be suitable for patients with mixed aetiology ulcers, following full assessment and specialist agreement as part of comprehensive management plan

Potential variance:

Class 3A and 3B bandages may be recommended by the vascular service to provide reduced compression in management of at risk limb or mixed aetiology ulcer patient group:

3A- spiral equates with 13 mmHg Profore 3® (S&N)	£4.25
3A- figure of 8 equates with 17 mmHg Profore 3 (S&N)	£4.25
3B -in spiral equates with 23 mmHg Profore 4 (S&N)	£3.82

Use wool layer and KLite® to shape and pad limb prior to applying Profore®

Discuss with Healthcare Professional initiating therapy or relevant clinical nurse specialist to ensure safe effective patient care which is documented in CNIS and ICP care plan with review date.

4.6. Medicated Bandages

Aim: to manage patients with lichenification and eczema and venous ulceration with compression therapy.

Paste Bandages

Ichthopaste® (Evolan) Zinc oxide paste and ichthammol bandage	7.5 cm x 6m	£3.97
Viscopaste® (Evolan) Cotton fabric medicated bandage with zinc oxide	7.5 cm x 6m	£3.94
ZipZoc® (Evolan)	14 x 82 cm	£3.47

4.7. Accessories:

4.71 Hosiery Application Aid

Aim: to support patients to self-manage application of hosiery who have poor dexterity.

Actiglide® (Lohmann Rauscher) PIP code 284 5196 Indications for use and application	One size	£15.67
Foot Butler® Medi Export Butler (legs) Medi Big Butler (legs) Product descriptor and YouTube application instructions	Stocking size 1-4 DT9007 PIP 329-8924 Stocking size 5-7 DT9008 PIP410-2612	£36.09

4.72: Waterproof Protector

Aim: to allow showering without removal of compression bandages.

(PL) Seal Tight® - (Autono-Med Ltd) Adult (Knee length)	Short length or Wide short leg	£10.83
---	-----------------------------------	---------------

5. PRODUCT DESCRIPTORS

5.1. Category: Compression Wrap

**Name of product: ReadyWrap® Lohmann Rauscher (L&R)
Calf and Compression Therapy (CT) Foot**

Description

Adjustable compression garment with VELCRO® brand fasteners
Short stretch properties giving therapeutic working pressures and tolerable lower resting pressures.
Static stiffness indices, similar to inelastic bandages.
50% overlapping straps prevent gapping and can accommodate changing limb circumference to contain and control oedema.

Comes with liner sock (no compression)

Sizes: Calf piece: S, M, L, XL, XXL. Length: 30cm/35cm
Foot piece: S, M, L, XL Length: regular or long

Colours: Beige or black

Life span: 6 months

Latex free

Indications for Use

Venous leg ulcers with or without chronic oedema and lymphoedema.
Prevention of recurrence of venous leg ulcers
Moderate exudate levels requiring more frequent dressing changes
Mobile and immobile patients
Patient potential to self-care

Contraindications

Arterial insufficiency
Acute episodes cellulitis/phlebitis
Uncontrolled heart failure
Inability to self-care or have assisted care to use
Known sensitivity to components of the garment

Cautions

Controlled cardiac failure
Diabetes
Peripheral neuropathy
Rheumatoid Arthritis
Renal Failure

How to apply/remove

Application. <https://lohmann-rauscher.co.uk/products/compression-wrap-systems/readywrap#useful-videos>
Foot piece can be omitted in absence of lower limb/ foot oedema, but should be used if oedema present and if the ulcer is low on the ankle.
For full instructions for use read the patient information leaflet that comes with the compression wrap.

Frequency of changes/care

Dependent on patient's needs. Should be worn during the day but can be removed at night.
Can be removed for daily shower, and regular application of emollients. Wash as per manufacturer's instructions.

Prescribing guidance

If unclear if this product will provide value based healthcare for the patient discuss with Vascular CNS prior to prescribing.
Product is new to formulary and clinician feedback is essential to ensure positive patient outcomes are being achieved.
Prescribe only one in the first instance, and monitor use before prescribing a second one for the other leg, if required.
It is not necessary to have one to wash and one to wear.
Replace every 6 months.
Unit cost may appear high however, when used appropriately and suits patient lifestyle this can be more cost effective than alternatives. If the HCP has to apply wraps, if patient unable to do so, this may also be more cost effective in terms of nursing time and overall cost compared to alternatives.

5.2. Off the Shelf British Class Hosiery

Name of product:
Duomed Soft® (Medi UK)

Description:

British Standard Compression Hosiery

Class 1 (18–21mmHg), class 2 (23–32mmHg) and class 3 (34–46mmHg)

Colour: sand and black

Latex free

Indications for Use

Prevention and treatment of chronic venous insufficiency
Mild oedema
Uncomplicated varicose veins with mild symptoms

Contraindications

Severe arterial insufficiency
Acute episode of cellulitis/phlebitis
Uncontrolled heart failure
Chronic oedema
Known allergy to any components of hosiery

Cautions

Controlled heart failure
Mild arterial insufficiency under specialist advice
Peripheral neuropathy
Rheumatoid arthritis
Diabetes
Renal Failure
Inability to tolerate the stocking fabric

How to apply/remove

Apply as per instructions on box/manufacturer's instructions
Applications details: Duomed soft and Duomed soft 2easy
<https://www.youtube.com/watch?v=04d9HjyBz6I>
Use application aid if required. [Actiglide application aid](#)

Care and Wear

Wash are required. Follow manufacturer's instructions.
Can be removed overnight to allow skin care and application of emollient.
One pair supplied per leg. Renew six monthly or if damaged

Prescribing guidance

Duomed soft patient record order form [Duomed Soft patient record order form](#)

When prescribing ensure full details on name of product, classification, colour and size are provided to ensure prescription details are accurate.

It is good practice to provide your contact details to allow pharmacist to contact you if necessary, to prevent delays in commencement of treatment.

5.3. Category: Round Knit, RAL/European class compression hosiery

Name of product:

1. Mediven Plus® (Medi UK) Off The Shelf

2. Mediven Plus Made to Measure® (MTM)

Description:

RAL class 1, 2 and 3 compression hosiery

Class 1 (18–21mmHg), class 2 (23–32mmHg) and class 3 (34–46mmHg)

Available in a wide range of colours

Latex free

Indications for Use

Lymphoedema

Chronic oedema

All stages of venous disease

MTM may be required if patient measurements are out with standard available sizes or if different options required

Contraindications

Severe arterial insufficiency

Acute episode of cellulitis/phlebitis

Uncontrolled heart failure

Known allergy to any components of hosiery

Cautions

Arterial insufficiency under specialist advice

Controlled heart failure

Peripheral Neuropathy

Rheumatoid arthritis

Diabetes

Renal Failure

Inability to tolerate the stocking fabric

How to apply/remove

Apply as per instructions on box/manufacturer's instructions

How to measure and fit Mediven off-the-shelf leg garments

[Medi UK how to measure and fit Mediven made to measure round knit below knee - YouTube](#)

How to apply and remove: [Mediven with and without an aid](#)

Use application aid if required. [Actiglide application aid](#)

Care and Wear

Follow manufacturer's instructions, wash as required.

One pair supplied per leg, renew six monthly or if damaged

Prescribing guidance

Mediven Plus and Mediven Plus MTM are not routinely to be used as first line treatment for leg ulcers unless standard treatments are excluded.

Mediven MTM patient is advised to retain re-order form for future use.

When prescribing ensure full details on name of product, classification. Colour and size are provided to ensure prescription details are accurate and do not cause delays

It is good practice to provide your contact details on the script to allow pharmacist to contact you if necessary to prevent delays in treatment commencing.

5.4. Category: Flat Knit Made to Measure Hosiery (description over two pages)

Name of product: **Jobst Elvarex Soft & Jobst Elverax.**

Essity (T/A BSN medical)

Description:

Custom-made compression hosiery, rigid flat-knit hosiery. European hosiery

Class 1 (18–21mmHg), Class 2 (23–32mmHg), Class 3 (34–46mmHg)

Available in a range of colours.

Variations: **Jobst Elvarex Soft:** Softer and more pliable fabric. **Latex Free**
Jobst Elvarex: Firmer fabric. **Contains latex in inner core of fabric.**

Indications for Use	Prevention of leg ulcer recurrence in the presence of chronic oedema To control more severe, persistent chronic oedema Lymphoedema Lipoedema Chronic oedema
Contraindications	Severe arterial insufficiency Uncontrolled heart failure Acute episodes of cellulitis/phlebitis Known latex allergy or inability Known allergies to components of product
Cautions	Controlled heart failure Arterial insufficiency under specialist advice Peripheral neuropathy Diabetes Rheumatoid arthritis Renal Failure Inability to tolerate stocking fabric
How to apply/remove	Apply as per instructions on box and manufacturer's instructions Tips for easy application of JOBST® Elvarex® and Elvarex® Soft Knee High (AD) - YouTube Use application aid if required
Care/Wear	Follow manufacturer's instructions. Wash as required. One pair supplied per leg. Renew six monthly or if damaged.
Prescribing guidance	Below knee order form Jobst Elvarex below knee order form JOBST Order Forms Update - JOBST Elvarex - Below Knee editable.pdf When prescribing ensure full details on name of product, classification, colour and size are provided to ensure prescription details are accurate and do not cause delays. If available, include manufacturer's product code, see appendices It is good practice to provide your contact details on the script to allow pharmacist to contact you if necessary, to prevent delays in treatment commencing. Patients should retain reorder forms to reorder.

5.5. Category: Off the Shelf Round Knit, European class compression hosiery

Name of product: Juzo Move® (Juzo UK)

Description

European class 1 and 2 compression hosiery
Class 1 (18–21mmHg), class 2 (23–32mmHg)-Available with silicone bands
Patented sliding knit fabric used in the instep
Available in range of colours

Latex Free

Indications for Use	Oedema Lymphoedema Chronic venous insufficiency All stages of venous disease
Contraindications	Arterial insufficiency Acute episodes cellulitis/phlebitis Uncontrolled heart failure Inability to tolerate the stocking fabric Known allergy to any components of product
Cautions	Controlled Heart Failure Peripheral neuropathy Rheumatoid arthritis Diabetes Renal Failure
How to apply/remove	More effective when worn during the day and when patient is active. Juzo Move® – easy donning and doffing – no tugging required - YouTube Apply as per instructions on box and manufacturer's instructions. Use application aid if required: Actiglide application aid
Frequency of care/wear	Follow manufacturer's instructions. Wash as required. One pair supplied per leg. Renew six monthly or if damaged.
Prescribing guidance	If cautions discuss with vascular CNS When prescribing ensure full details on name of product, classification, colour and size are provided to ensure prescription details are accurate. Where possible, include manufacturer's product code (see appendices) It is good practice to provide your contact details on the prescription to allow the Pharmacist to contact you, if necessary to delay commencement of treatment.

5.6. Category: Off the shelf Hosiery Kit	
Name of product: Altipress 40 Hosiery Kit (URGO)	
<p>Description: Consists of 2 stockings that are worn on top of each other:</p> <ul style="list-style-type: none"> • First Layer is a liner (10mmHg) • Second layer is a British Standard Class 3 stocking (30mm Hg) <p>Latex free</p>	
Indications for Use	Prevention of recurrence of venous leg ulcer Management of venous leg ulcer ≤ 10 cm, with low level of exudate, in the absence of oedema Normal shaped limb Mobile and immobile patients Patient potential to self-care
Contraindications	Severe arterial insufficiency Acute episode of cellulitis/phlebitis Uncontrolled heart failure Presence of oedema Abnormal limb shape Inability to tolerate stocking fabric Known allergy to any components of hosiery
Cautions	Arterial insufficiency under specialist advice Controlled heart failure Peripheral Neuropathy Rheumatoid arthritis Diabetes Renal Failure
How to apply/remove	Apply as per instructions on the box/manufacturer's How to apply UTUBE application guide Use application aid if required
Frequency of changes	Dependent of patient's needs/as skin condition tolerates Can be removed for daily shower and regular application of emollients Can stay in place for up to 7 days as skin condition ulcer allows Can remove stocking at night, leaving liner in place
Prescribing guidance	Altipress ordering information: Order Form Altipress Stock - Altimed Compression Hosiery Altimed Compression Hosiery When prescribing ensure full details on name of product, classification, colour and size are provided to ensure prescription details are accurate It is good practice to provide your contact details on the script to allow the pharmacist to contact you if necessary to prevent delay in commencement of treatment

5.7. Category: Off the shelf Hosiery Kit	
Name of product: Actilymph® Hosiery Kit (Lohmann Rauscher (L & R))	
Description: Consists of 2 stockings that are worn on top of each other: <ul style="list-style-type: none"> • First Layer is a liner (10mmHg); and • Second layer below knee open toe European Class 2 stocking (23-32mmHg) Together they provide 40mmHg at the ankle required for leg ulcer healing Latex free	
Indications for Use	Prevention of recurrence of venous leg ulcer Management of venous leg ulcer ≤10cm, with low level of exudate, in the presence of oedema or lymphoedema Mobile and immobile patients Patient potential to self-care
Contraindications	Severe arterial insufficiency Acute episode of cellulitis/phlebitis Uncontrolled heart failure Abnormal limb shape Inability to tolerate stocking fabric Known allergy to any components of hosiery
Cautions	Arterial insufficiency under specialist advice Controlled heart failure Peripheral Neuropathy Rheumatoid arthritis Diabetes Renal Failure
Hot wo apply/remove	Apply as per instructions on the box/manufacturer' Application: Actilymph how to apply Use application aid if required
Care/Wear	Dependent of patient's needs/as skin condition tolerates Can be removed for daily shower and regular application of emollients Can stay in place for up to 7 days as skin condition ulcer allows Can remove stocking at night, leaving liner in place If one pair supplied per leg, renew every six months or if damaged
Prescribing guidance	Online size/hosiery/sizing-and-measuring and Patient record form Actilymph L&R Medical (lohmann-rauscher.co.uk) (measurement form in useful tools/Measuring guide tab) When prescribing ensure full details on name of product, classification, colour and size are provided to ensure prescription details are accurate. If available, also include manufacturer's product code. It is good practice to provide your contact details on the script to allow the pharmacist to contact you if necessary to prevent delay in commencement of treatment

5.8. Category

Category 1: Short Stretch Inelastic Bandages

Name of product: Actico cohesive inelastic compression bandage. Lohmann Rauscher (L&R)

Description:

Cohesive inelastic compression bandage to be used with K-soft®

Designed to deliver 40mmHg at ankle

Contains Latex

Sizes:

10cm x 6m (PIP Codes: 271-5431) 12cm x 6m (PIP Codes: 314-0894)

Indications for Use	Venous leg ulcers with or without chronic oedema Chronic oedema and lymphoedema Mobile and immobile patients ABPI >0.8-1.3mmHg
Contraindications	Arterial insufficiency Uncontrolled heart failure Acute cellulitis/phlebitis Known latex allergy Known sensitivity to any components of the product
Cautions	Controlled cardiac failure Diabetes Peripheral neuropathy Rheumatoid arthritis Renal failure
How to apply/remove	https://lohmann-rauscher.co.uk/products/bandages-and-support/actico#videos Use wool layer to pad and shape limb prior to application of Actico® Ankle measurements 18-25cm apply one layer of Actico® 25-30cm apply second layer in opposite direction from the ankle. Apply at 100% stretch using 'lock and roll' technique, 50%ltd overlap. Removal: carefully with scissors or by unwrapping
Frequency of changes	Actico® can be left in situ up to 7 days. Consideration of required frequency of change should be following ongoing assessment for exudate, leakage and bandage slippage.
Prescribing guidance	Actico® should be kept dry and not submerged in water. A Seal-Tight waterproof bandage protector may be used to enable washing/bathing while Actico® is in-situ

5.9. Category	
Category 1: Short Stretch Inelastic Bandages	
Name of product: 3M Coban 2[®] Two-Layer Compression System	
Description Cohesive 2 layer multi-component compression bandage kit containing: <ul style="list-style-type: none"> • comfort foam layer; and • cohesive short-stretch bandage Designed to deliver 40mmhg at ankle Latex free Sizes: Standard Layer 1 10cm x 2.7m Layer 2 10cm x 3.5m XL Layer 1 10cm x 3.5m Layer 2 10cm x 4.5m	
Indications for Use	Venous leg ulcers with or without chronic oedema Chronic oedema Lymphoedema ABPI > 0.8-1.3mmHg
Contraindications	Arterial insufficiency Uncontrolled cardiac failure Acute cellulitis/Phlebitis Known sensitivity to any components of product
Cautions	Controlled cardiac failure Diabetes Peripheral neuropathy Rheumatoid arthritis Renal failure
How to apply/remove	Application: https://www.youtube.com/watch?v=5iGA9tCyFyA Should only applied by clinician with appropriate level of competence Removal: Remove carefully with scissors or by unwrapping.
Frequency of changes	3M Coban 2 [®] can be left in patient situ up to 7 days. Consideration of required frequency of change should be following ongoing assessment for exudate, leakage and bandage slippage. Less likelihood of slipping due to cohesive layers, however as oedema reduces may require reapplying.
Prescribing guidance	3M Coban 2 [®] should be kept dry and not submerged in water. A Seal Tight [®] waterproof bandage protector may be used to enable washing/bathing while 3M Coban 2 [®] is in-situ Prescribe individually. Maximum of four bandage kits and review.

5.10. Category: Short stretch Inelastic Bandage

Name of Product: 3M Coban® 2 Lite

Description:

Two-layer Reduced/Modified Compression System (20 – 30 mmHg)

3M Coban 2 Lite® two-layer multi-component compression bandage kit containing:

- comfort foam layer; and
- cohesive short-stretch bandage

Latex free

Sizes:

Layer One: 10cm x 2.7m

Layer Two: 10cm x 3.2m

Indications for Use	Venous and mixed aetiology leg ulcers with or without chronic oedema Chronic oedema Lymphoedema ABPI > 0.6 and 0.8mmHg
Contraindications	Arterial insufficiency Uncontrolled heart failure Acute cellulitis/phlebitis Known allergy to any components of product
Cautions	Controlled heart failure Peripheral neuropathy Rheumatoid arthritis Diabetes Renal Failure
How to apply	Should only be applied by appropriately trained clinicians_ https://www.youtube.com/watch?v=5iGA9tCyFyA Remove carefully with scissors or by unwrapping
Frequency of change	3M Coban® 2 Lite can be left in situ for up to 7 days. Consideration of required frequency of change should be following ongoing assessment for exudate, leakage and bandage slippage
Prescribing guidance	3M Coban® 2 Lite should be kept dry and not submerged in water. A Seal Tight® waterproof bandage protector may be used to enable washing/bathing while 3M Coban® 2 Lite is in-situ Do not prescribe large volume, once oedema is controlled prescribe up to 4 at a time to reduce waste and prompt patient review of efficacy of treatment

5.11. Category
Medicated Bandages: Paste Bandages

1. Ichthopaste® (Evolan) Zinc oxide paste (6.32%) and ichthammol (2%) bandage
 7.5 cm x 6m PIP Code 033-2668
2. Viscopaste (10% Zinc oxide) (Evolan) cotton fabric medicated bandage with zinc oxide
 7.5 cm x 6m PIP Code 033-2734
3. ZipZoc® (20% Zinc oxide) (Evolan) 14 x 82 cm PIP Code (box of 4)
 PIP code (box of 10)

Indications for Use	<p>Zinc paste bandages for use with compression bandages for the treatment of CVI for patients with lichenification and eczema and venous ulceration.</p> <p>They provide a physical barrier to stop damage from scratching and help to break the “itch- scratch” cycle in these conditions.</p>
Cautions / contraindication	<p>Inform patients that they should contact their HCP if bandage becomes tight. Paste bandages are associated with hypersensitivity reactions and should be used with caution Apply small patch of bandage to skin (i.e. inner arm) for 48 hours prior to using as a patch test if allergy suspected. Recheck skin after further 2 days Do not use if known allergy</p>
Application guidance	<p>There is a special method of application using a ‘pleat’ technique, rather than a spiral. This stops the bandage from tightening and constricting the limb as it starts to dry and allows greater freedom of movement To ensure patient safety refer to manufacturer’s instructions prior to use. When zinc paste bandages are used under compression bandaging the compression should be changed to modified compression.</p>
Prescribing guidance	<p>Topical steroids action is intensified if used with paste bandages and doses should be altered accordingly (Topical steroid must be prescribed for individual patient) Application change can be left for up to 7 days depending on exudate and extent of skin condition. However if applying topical steroid it will require more frequent changing. Specific supply problems. If unable to obtain consider switching to other type of paste bandage or topical zinc in ointment or 1%Ichthammol zinc ointment</p>
Patient Guidance	<p>Inform patients that they should contact their HCP if bandage becomes tight.</p>

Appendix 1

Immediate Care for Lower Limb Wounds

National wound care strategy programme (NWCSP) guidance on immediate care for lower limb wounds. For further information: [Lower Limb | National Wound Care Strategy Programme](#)

 Immediate care includes identification of red flags


- Spreading infection
- Red hot swollen leg
- Suspected DVT
- Suspected skin cancer
- Limb-threatening ischaemia

 **Escalate immediately to appropriate Specialist**

If no red flags are present and the wound is on the ankle and below the knee

Immediate care should commence at first patient presentation:

- Cleanse the wound and skin, apply emollient
- Apply a simple low –adherent dressing with sufficient absorbency
- Discuss with the patient why they require compression.
- Apply ≤ 20 mmHg (Class 1 British Standard Hosiery (14-17mmHg) or 2 liners (20mmHg)
- Arrange full holistic assessment including Doppler within a 14 day timeframe and increase compression to 40mmHg if suitable (ABPI 0.8-1.3mmHg)

 **In the presence of severe oedema, limb distortion, high levels of exudate prioritise and arrange full holistic leg ulcer assessment and Doppler.**

Documentation:

Document on Clinical Nurse Information System (CNIS) using **leg ulcer pathway** assessment and observations.

Important: if previously using wound care section transfer onto going management to Leg ulcer pathway.

Appendix 2

Implement Wound Hygiene

Wound hygiene is a structure approach for overcome the barriers to healing due to biofilm formation, in hard to heal wounds and should be implemented at each patient wound care intervention as part of a proactive wound healing strategy. (Source Murphy C, Atkin L, et al Embedding Wound Hygiene into a proactive wound healing strategy. Journal Wound Care, 2022:31.S1-S24) International Consensus Document)

Image Courtesy of Convatec



APPENDIX 3

6.3 Allergens and Use of Compression Bandages

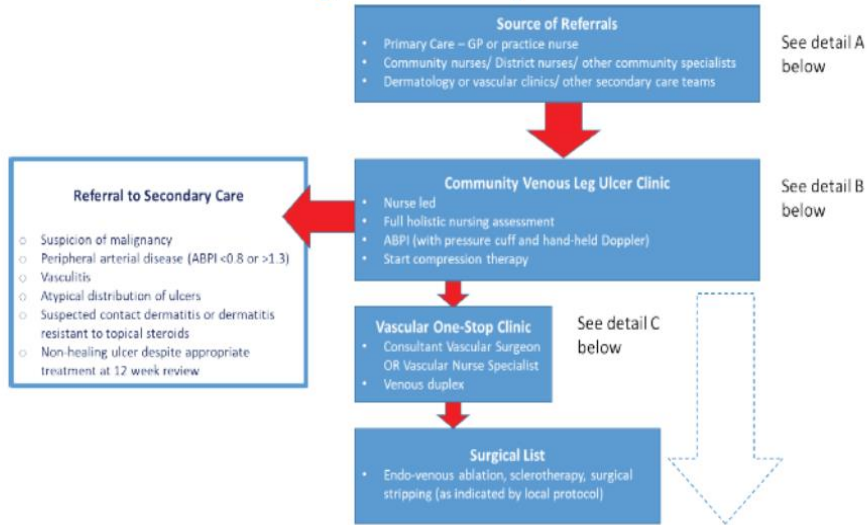
- “The incidence of contact allergy increases with the duration of ulceration”. Principal sensitisers include ingredients of topical applications, dressings and bandages. Examples include: lanolin, antibiotics, antiseptics, preservatives, emulsifiers, resins and latex. However, the majority of latex allergy incidence is associated with inhalation rather than contact.
- The guideline has taken into account such factors and where possible, minimised the risk to patients and staff in product selection and making clear identification of those containing latex.
- To minimise risk those compression bandages containing latex, have latex embedded into core of product and therefore are not in direct contact with skin; with majority of products latex free, providing alternatives for those at risk..

PATIENT: If an allergy is suspected/known: confirm diagnosis (patch test)

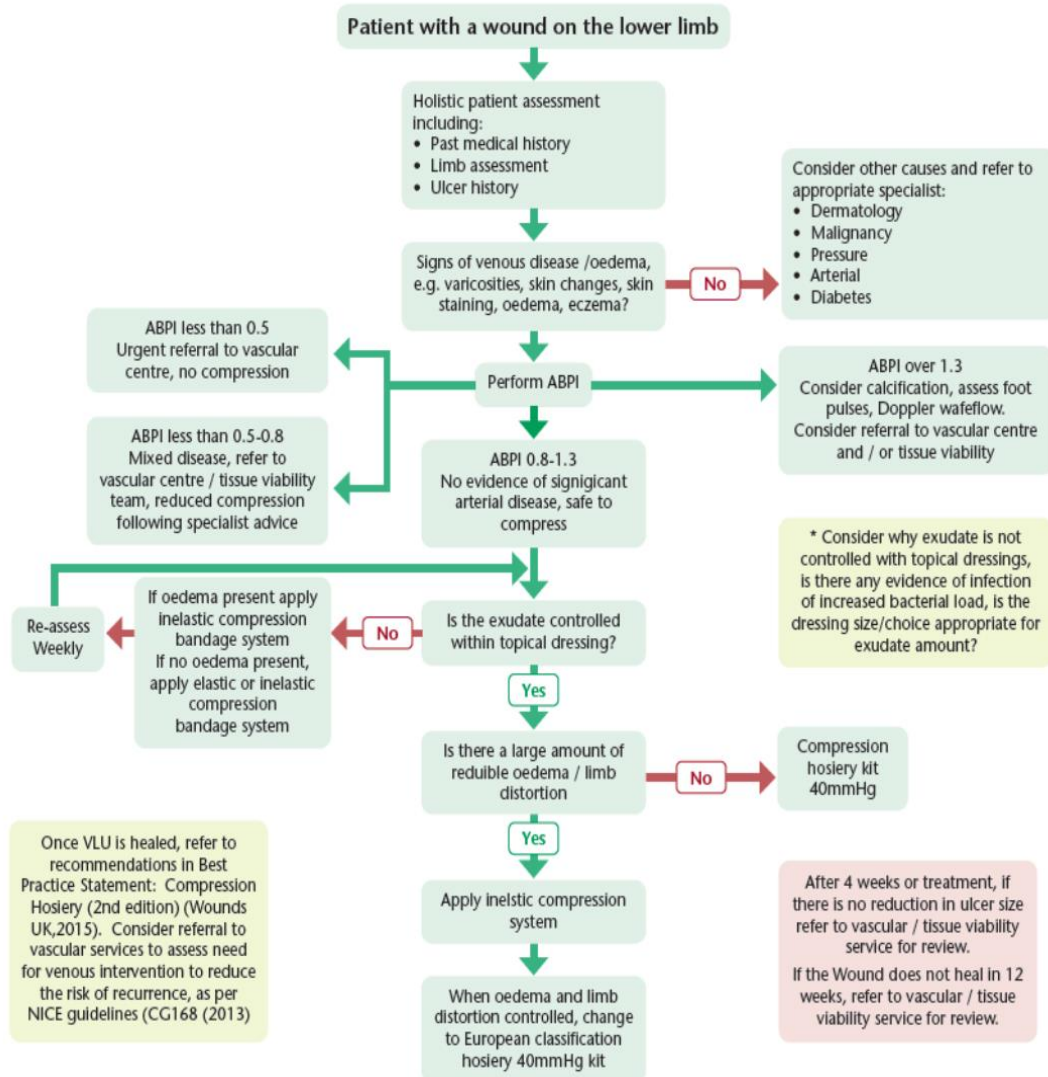
- treat contact dermatitis appropriately
- do not use bandages with latex (or known sensitiser)
- use bandages with high cotton content, or that have double covered yarns to limit skin contact with elastic components
- use of a cotton tubular under layer (which must be wrinkle free on application)

APPENDIX 4

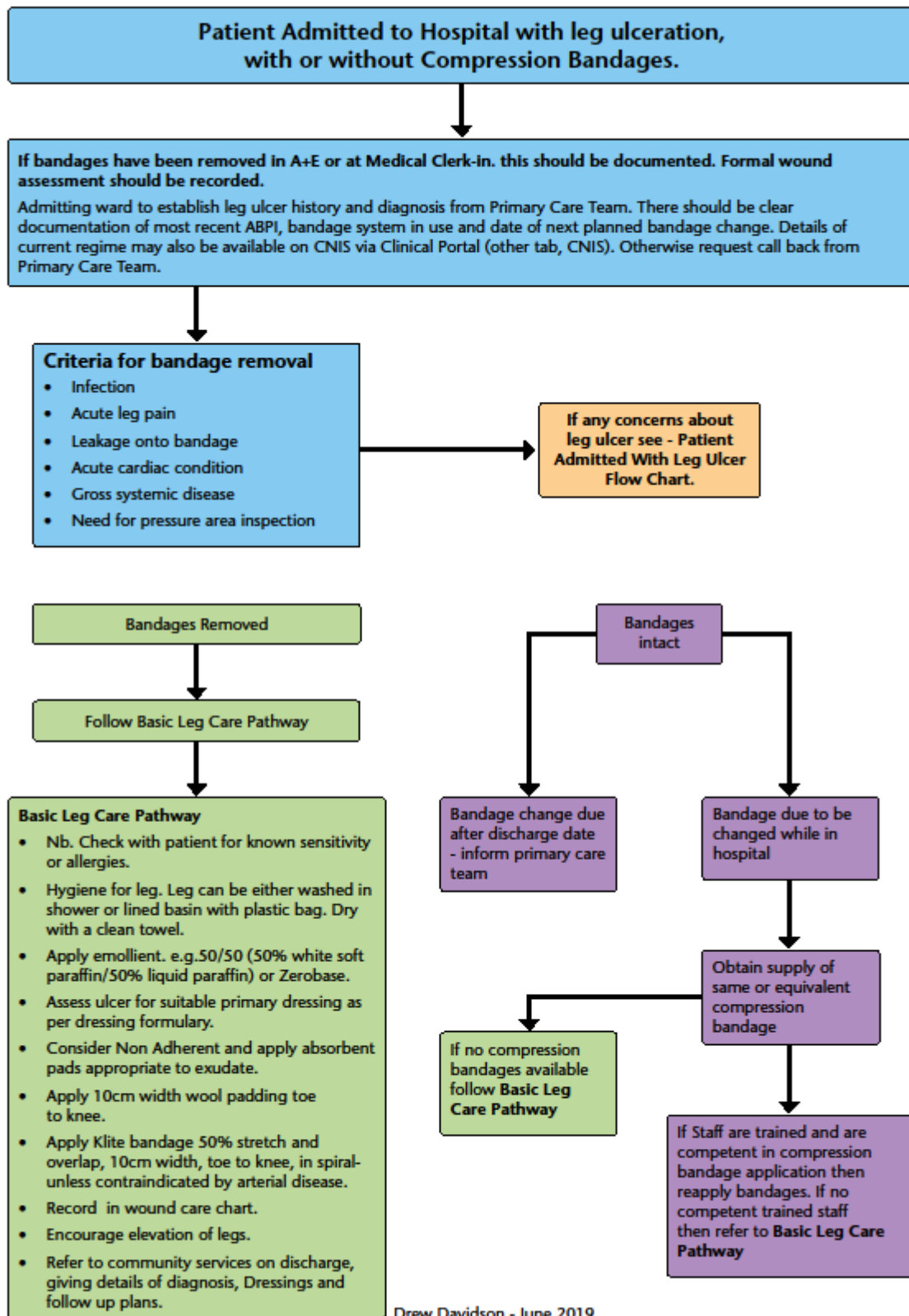
Figure 1. Pathway Overview



Leg Ulcer Treatment Algorithm



APPENDIX 5



**Non Medicines Utilisation sub group:
Compression Therapy Implementation Group Membership**

Name	Contact
Tricia McShane (Chair of working group), Vascular Clinical Nurse Specialist (CNS) Primary Care	Tricia.McShane@ggc.scot.nhs.uk
Drew Davidson, Vascular CNS, IRH, RAH, QEUH)	Drew.Davidson@ggc.scot.nhs.uk
Alison Duncan Vascular CNS QEUH	Alison.Duncan2@ggc.scot.nhs.uk
Elaine Farrell, Advanced Practitioner Tissue Viability, NHS Highland (Argyll & Bute)	elaine.farrell@nhs.scot
Celia MacAskill, Dermatology CNS, NHSGGC	cecilia.macaskill@ggc.scot.nhs.uk
Angela McPake, community staff nurse, NE Locality	Angela.McPake@ggc.scot.nhs.uk
Isabella Proctor, Orthotic Clinical Assistants Team Lead	Isabella.Proctor@ggc.scot.nhs.uk
Alan Simpson, Treatment Room Nurse, North Glasgow HSCP	Alan.Simpson@ggc.scot.nhs.uk
Carol Smart, Prescribing Advisor, Central Prescribing Team and Advanced Pharmacist South Sector.	Carol.Smart@ggc.scot.nhs.uk
Lucy Shaw, Associate District Nurse, NE Sector	Lucy.Shaw@ggc.scot.nhs.uk
Lynne Watret Interim Non-Medical Prescribing Lead, Central Prescribing Team, NHSGGC	Lynne.watret@ggc.scot.nhs.uk

Addendum

ADDITIONAL INFORMATION ON PRESCRIBING CODES FOR PRODUCT RANGE

The following information provides a tool to support accurate prescribing and timely access to products for patients.

Companies	
Urgo Range	Page 29
Jobst Elvarex	Page 31
Mediven	Page 33
Lohmann & Rauscher (L&R)	Page 38
Juzo Move	Page 41
3M	Page 54
Smith & Nephew	

Nb Options on accessing products may vary depending on whether hosiery are made to measure or not.	
Options	
Option 1	Can be obtained from wholesalers via local community pharmacy *
Option 2	Order direct from company
Option 3	Dispensing Appliance Contractors (DAC)

*Wholesalers may stock a limited range of hosiery and wraps. Check first, prior to ordering if regular supply is available or if a special handling charge will be applied. Note any handling charge is not reimbursable.

Urgo range				
Product bandage	Colour	Size	MPC	PIP
K-Lite	white	5cm x 4.5m	770545	239-3619
K-Lite	white	7cm x 4.5m	770745	239-3627
K-Lite	white	10cm x 4.5m	771045	239-3635

K-Lite	white	15cm x 4.5m	771545	239-3643
K-Lite Long	white	10cm x 5.25m	771052	325-7110
Product wadding bandage				
K-Soft	white	10cm x 3.5m	761035	266-8374
K-Soft Long	white	10cm x 4.5m	761045	325-7177
Product Altipress liner pack (3)				
Altipress Liner pack	white	short/small	55SLC10	337-1473
Altipress Liner pack	white	short/medium	55SLC20	337-1481
Altipress Liner pack	white	short/large	55SLC30	337-1499
Altipress Liner pack	white	short/ex large	55SLC40	337-1507
Altipress Liner pack	white	short ex ex large	55SLC50	337-1515
Altipress Liner pack	soft beige	short/small	55SLC12	341-8506
Altipress Liner pack	soft beige	short/medium	55SLC22	341-8696
Altipress Liner pack	soft beige	short/large	55SLC32	341-8688
Altipress Liner pack	soft beige	short/ex large	55SLC42	341-8670
Altipress Liner pack	soft beige	short/ex ex large	55SLC52	341-8613
Altipress Liner pack	white	regular/small	55RLC10	337-1523
Altipress Liner pack	white	regular/medium	55RLC20	337-1531
Altipress Liner pack	white	regular/large	55RLC30	337-1549
Altipress Liner pack	white	regular/ex large	55RLC40	337-1556
Altipress Liner pack	white	ex ex large	55RLC50	337-1564
Altipress Liner pack	soft beige	regular/small	55RLC12	341-8662
Altipress Liner pack	soft beige	regular/medium	55RLC22	341-8654
Altipress Liner pack	soft beige	regular/large	55RLC32	341-8647
Altipress Liner pack	soft beige	regular/ex large	55RLC42	341-8621
Altipress Liner pack	soft beige	regular/ex ex large	55RLC52	341-8605
Altipress Liner pack	white	long/small	55LLC10	337-1572
Altipress Liner pack	white	long/medium	55LLC20	337-1580
Altipress Liner pack	white	long/large	55LLC30	337-1598
Altipress Liner pack	white	long/ex large	55LLC40	337-1606
Altipress Liner pack	white	long/ex ex large	55LLC50	337-1614
Altipress Liner pack	soft beige	long/small	55LLC12	341-8589
Altipress Liner pack	soft beige	long/medium	55LLC22	341-8563
Altipress Liner pack	soft beige	long/large	55LLC32	341-8530
Altipress Liner pack	soft beige	long/ ex large	55LLC42	341-8522

Altipress Liner pack	soft beige	long/ex ex large	55LLC52	341-8514
Product Altipress 40 kits				
Altipress Hosiery Kit	soft beige	short/small	55SKO12	337-1325
Altipress Hosiery Kit	soft beige	short/medium	55SKO22	337-1333
Altipress Hosiery Kit	soft beige	short/large	55SKO32	337-1341
Altipress Hosiery Kit	soft beige	short/ ex large	55SKO42	337-1358
Altipress Hosiery Kit	soft beige	short/ ex ex Large	55SKO52	337-1366
Altipress Hosiery Kit	soft beige	regular/small	55RKO12	337-1374
Altipress Hosiery Kit	soft beige	regular/medium	55RKO22	337-1382
Altipress Hosiery Kit	soft beige	regular/large	55RKO32	337-1390
Altipress Hosiery Kit	soft beige	regular/ex large	55RKO42	337-1408
Altipress Hosiery Kit	soft beige	regular/ex ex large	55RKO52	337-1416
Altipress Hosiery Kit	soft beige	long/small	55LKO12	337-1424
Altipress Hosiery Kit	soft beige	long/medium	55LKO22	337-1432
Altipress Hosiery Kit	soft beige	long/large	55LKO32	337-1440
Altipress Hosiery Kit	soft beige	long/ex large	55LKO42	337-1457
Altipress Hosiery Kit	soft beige	long/ex ex large	55LKO52	337-1465
Product Made to Measure				
Altipress Liner Pack	white	contains two MTM liners	55LLC90	337-1655
Altipress 40 hosiery kit	soft beige	stocking and MTM two liners	55LKO92	337-1663

Ordering options	Contact details
1. Wholesalers*	AAH, Alliance, Phoenix
2. Direct from manufacturer	Urgo Limited, Sullington Road, Shepshed, Leicestershire, LE12 9JG. Telephone: +44 (0) 1509 501720

JOBST Elvarex Hosiery				
Product custom fit	Style	Size	MPC	PIP
Elvarex Below Knee		CCL1 (18-1mmHg)	L1-01-04	n/a
Elvarex Below Knee		CCL2 (23-2mmHg)	L2-02-04	n/a

Elvarex Below Knee		CCL3 (34-6mmHg)	L3-03-04	n/a
Elvarex Below Knee	Closed toe		L-A001	n/a
Elvarex Below Knee	Ankle Pad Profile		L-A002	n/a
Elvarex Below Knee	Zipper		L-A003	n/a
Elvarex Below Knee	Silicone Band		L-A004	n/a
Elvarex Below Knee	Non Standard Colour		L-A008	n/a
Elvarex Below Knee	T-Heel	(CCL2-3 Only)	L-A010	n/a
Elvarex Below Knee	Soft Fit	(CCL1-3 only)	L-A016	n/a
Elvarex Soft Below Knee		CCL1 (18-1mmHg)	L1-10-04	n/a
Elvarex Soft Below Knee		CCL2 (23-2mmHg)	L2-08-04	n/a
Elvarex Soft Below Knee		CCL3(34-46mmHg)	L3-09-04	n/a
Elvarex Soft Below Knee	Closed Toe		L-A001S	n/a
Elvarex Soft Below Knee	Silicone Band		L-A004S	n/a
Elvarex Soft Below Knee	Non Standard Colour		L-A008S	n/a
Elvarex Soft Below Knee	T-Heel		L-A010S	n/a
Elvarex Soft Below Knee	Soft Fit		L-A016S	n/a

Ordering options	
1. N/A	
2. Direct from manufacturer	Send completed order form and prescription to Jobst Delivered Service using free post envelopes provided by Company
	Compression Therapy Helpline 0800 389 8424, Email: compression.uk@bsnmedical.com, www.bsnmedical.co.uk
	Contact details: Alyson MacGregor +44 7766471577 alyson.macgregor@essity.com
3. Dispensing Appliance Contractor (DAC)	Daylong: 0800 195 0160; prescriptions@daylong.co.uk www.daylong.co.uk/prescriptions

Mediven and Duomed Hosiery Range											
All hosiery below knee round knit graduated compression											
Hosiery Light Compression colour option/open and closed toe	Colour	Class 1	Duomed soft	MPC		small	medium	large	x-large	xx-large	
Duomed soft Elastic Hosiery, Light Compression CCL 1	Black	14-17mmHg	Open Toe	DT511/B/		388-1802	388-1810	388-1836	338-1836	338-1844	
Duomed soft Elastic Hosiery, Light Compression CCL 1	Black	14-17mmHg	Closed Toe	DT512/B/		388-1851	388-1869	388-1877	388-1885	388-1893	
Duomed soft Elastic Hosiery, Light Compression CCL 1	Sand	14-17mmHg	Open Toe	DT511/		367-4850	367-4868	367-4876	367-4884	367-4892	
Duomed soft Elastic Hosiery, Light Compression CCL 1	Sand	14-17mmHg	Closed Toe	DT512/		367-4926	367-4934	367-4959	367-4967	367-4975	
Hosiery Medium Compression colour option/open and closed toe		Class 2									
Duomed soft Elastic, Medium Compression CCL 2	Black	18-22mmHg	Open Toe	DT521/B/		388-2008	388-2016	388-2024	388-2023	388-2040	
Duomed soft Elastic, Medium Compression CCL 2	Black	18-22mmHg	Closed Toe	DT522/B/		388-2057	388-2073	388-2073	388-2081	388-2099	
Duomed soft Elastic Hosiery, Medium Compression CCL 2	Sand	18-22mmHg	Open Toe	DT521/		367-5089	367-5097	367-5105	367-5113	367-5121	
Duomed soft Elastic Hosiery, Medium Compression CCL 2	Sand	18-22mmHg	Closed Toe	DT522/		367-5139	367-5147	367-5154	367-5162	367-5170	
Hosiery Strong Compression		Class 3									
Duomed soft Elastic Hosiery, Strong Compression CCL 3	Sand	25-35mmHg	Open Toe	DT532/		367-5287	367-5295	367-5303	367-5311	367-5329	
Hosiery Mediven Plus RAL Compression open toe length and width option		Class 1	Mediven Plus		I	II	III	IV	V	VI	VII
Mediven Plus Hosiery, CCL 1	Beige	18-21mmHg	Open Toe	DT101/0/	215-6016	323-5405	323-5413	323-5421	323-5439	323-5447	323-5454
Mediven Plus Hosiery, CCL 1	Beige	18-21mmHg	Open Toe, Petite	DT102/0/	323-	323-	323-	323-	323-	323-	32357

			Length		5678	5686	5694	5702	5710	5728	36
Mediven Plus Hosiery, CCL 1	Beige	18-21mmHg	Open Toe, Extra Wide Calf	DT103/0/	323-5462	323-5470	323-5488	323-5496	323-5504	323-5512	323-5520
Mediven Plus Hosiery, CCL 1	Beige	18-21mmHg	Open Toe, Petite Length, Extra Wide Calf	DT104/0/	323-5744	323-5751	323-5769	323-5777	323-5785	323-5793	323-5801
Hosiery Mediven Plus RAL Compression closed toe length and width option		Class 1									
Mediven Plus Hosiery, CCL 1	Beige	18-21mmHg	Closed Toe	DT101CT/0/	421-6487	421-6495	421-6503	421-6511	421-6537	421-6545	421-6560
Mediven Plus Hosiery, CCL 1	Beige	18-21mmHg	Closed Toe, Petite Length	DT102CT/0/	421-6735	421-6743	421-6750	421-6768	421-6776	421-6784	421-6792
Mediven Plus Hosiery, CCL 1	Beige	18-21mmHg	Closed Toe, Extra Wide Calf	DT103CT/0/	421-6396	421-6420	421-6438	421-6446	421-6453	421-6461	421-6479
Mediven Plus Hosiery, CCL 1	Beige	18-21mmHg	Closed Toe, Petite Length, Extra Wide Calf	DT104CT/0/	421-6875	421-6883	421-6891	421-6909	421-6917	421-6925	421-6933
Hosiery Mediven Plus RAL Compression open toe length and width option		Class 1									
Mediven Plus Hosiery, CCL 1	Black	18-21mmHg	Closed toe	DT101CT/5	421-6586	421-6602	421-6628	421-6669	421-6685	421-6719	421-6727
Mediven Plus Hosiery, , CCL 1	Black	18-21mmHg	Closed toe, Petite Length	DT102CT/5	421-6800	421-6818	421-6826	421-6834	421-6842	421-6859	421-6867
Mediven Plus Hosiery, CCL 1	Black	18-21mmHg	Closed toe, Extra Wide Calf	DT103CT/5	421-6362	421-6370	421-6388	421-6321	421-6339	421-6347	421-6354
Mediven Plus Hosiery, CCL 1	Black	18-21mmHg	Closed toe, Petite Length, Extra Wide	DT104CT/5	421-6941	421-6958	421-6966	421-6974	421-6982	421-6990	421-7006
Hosiery Mediven Plus RAL Compression open toe length and width option		Class 1									
Mediven Plus Hosiery, CCL 1	Black	18-21mmHg	Open toe	DT101/5/	323-5538	323-5546	323-5553	323-5561	323-5579	323-5587	323-5596
Mediven Plus Hosiery, CCL 1	Black	18 -21mmHg	Open toe, petite length	DT102/5/	323-5819	323-5827	323-5835	323-5843	323-5850	323-5868	323-5876
Mediven Plus Hosiery, CCL 1	Black	18 -21mmHg	Open toe, extra wide calf	DT103/5/	323-5603	323-5611	323-5629	323-5637	323-5645	323-5652	323-5660
Mediven Plus Hosiery, CCL 1	Black	18-21mmHg	Open toe, petite length, extra wide calf	DT104/5/	323-5884	323-5892	323-5900	323-5918	323-5926	323-5934	323--5801
Hosiery Mediven Plus RAL Compression open toe length and width option		Class 2									

Mediven Plus Hosiery, CCL 2	Beige	23-32mmHg	Open toe	DT201/0/	323-5752	323-5959	323-5967	323-5975	323-5983	323-5991	323-6007
Mediven Plus Hosiery, CCL 2	Beige	23-32mmHg	Open toe, petite length	DT202/0/	323-6239	323-6247	323-6254	323-6212	323-6270	323-6288	323-6296
Mediven Plus Hosiery, CCL 2	Beige	23-32mmHg	Open toe, extra wide calf	DT203/0/	323-6024	323-6023	323-6031	323-6049	323-6056	323-6064	323-6072
Mediven Plus Hosiery, CCL 2	Beige	23-32mmHg	Open toe, petite length, extra wide calf	DT204/0/	323-6304	323-6312	323-6320	323-6338	323-6346	323-6353	323-6361
Hosiery Mediven Plus RAL Compression open toe length and width option	Class 2										
Mediven Plus Hosiery, CCL 2	Black	23-32mmHg	Open toe	DT201/5/	323-6080	323-6098	323-6106	323-6114	323-6122	323-6130	323-6148
Mediven Plus Hosiery, CCL 2	Black	23-32mmHg	Open toe, petite length	DT202/5/	323-6379	323-6387	323-6395	323-6403	323-6411	323-6429	323-6437
Mediven Plus Hosiery, CCL 2	Black	23-32mmHg	Open toe, extra wide calf	DT203/5/	323-6155	323-6163	323-6171	323-6189	323-6197	323-6213	323-6221
Mediven Plus Hosiery, CCL 2	Black	23-32mmHg	Open toe, petite length, extra wide calf	DT204/5/	323-6445	323-6452	323-6460	323-6478	323-6486	323-6494	323-6502
Hosiery Mediven Plus RAL Compression open toe length and width option	Class 2		Closed Toe								
Mediven Plus Hosiery, CCL 2	Beige	23-32mmHg	Closed toe	DT201CT/0	421-7501	421-7519	421-7527	421-7535	421-7543	421-7550	421-7568
Mediven Plus Hosiery, CCL 2	Beige	23-32mmHg	Closed toe, petite length	DT202CT/0	421-7642	421-7659	421-7667	421-7675	421-7683	421-7691	421-7709
Mediven Plus Hosiery, CCL 2	Beige	23-32mmHg	Closed toe, extra wide calf	DT203CT/0	421-7360	421-7378	421-7386	421-7394	421-7402	421-7410	421-7428
Mediven Plus Hosiery, CCL 2	Beige	23-32mmHg	Close toe, petite length, extra wide calf	DT204CT/0	421-7782	421-7790	421-7808	421-7816	421-7824	421-7932	421-7840
Hosiery Mediven Plus RAL Compression open toe length and width option	Class 2		Closed Toe								
Mediven Plus Hosiery, CCL 2	Black	23-32mmHg	Closed toe	DT201CT/5	421-7576	421-7584	421-7592	421-7600	421-7618	421-7626	421-7634
Mediven Plus Hosiery, CCL 2	Black	23-32mmHg	Closed toe, petite length	DT202CT/5	421-7717	421-7725	421-7733	421-7741	421-7758	421-7766	421-7774
Mediven Plus Hosiery, CCL 2	Black	23-32mmHg	Closed toe, extra wide calf	DT203/CT/5	421-7436	421-7444	421-7451	421-7469	421-7477	421-7485	421-7493
Mediven Plus Hosiery, CCL 2	Black	23-32mmHg	Close toe, petite length, extra wide calf	DT204?CT/5	421-7857	421-7865	421-7873	421-7881	421-7949	421-7956	421-7964

Hosiery Mediven Plus RAL Compression open toe length and width option	Class 3										
Mediven Plus Hosiery, CCL 3	Beige	36-46 mmHg	Open toe	DT401/0	323-5984	323-6510	323-6528	323-6536	323-6544	323-6551	323-6569
Mediven Plus Hosiery, CCL 3	Beige	36-46 mmHg	Open toe, petite length	DT402/0	323-6718	323-6726	323-6734	323-6742	323-6759	323-6767	323-6775
Mediven Plus Hosiery, CCL 3	Beige	36-46 mmHg	Open toe, extra wide calf.	Not available							
Mediven Plus Hosiery, CCL 3	Beige	36-46 mmHg	Open toe, petite length, extra wide calf	DT4021/0	323-6577	323-6585	323-6593	323-6601	323-6619	323-6627	323-6635
Hosiery Mediven Plus RAL Compression open toe length and width option	Class 3										
Mediven Plus Hosiery, CCL 3	Black	36-46 mmHg	Open toe	DT401/5	323-6643	323-6650	323-6668	323-6676	323-6684	323-6692	323-6700
Mediven Plus Hosiery, CCL 3	Black	36-46 mmHg	Open toe, petite length	DT402/5	323-6783	323-6791	323-6809	323-6817	323-6825	323-6833	323-6841
Mediven Plus Hosiery, CCL 3	Black	36-46 mmHg	Open toe, extra wide calf	Not available							
Mediven Plus Hosiery, CCL 3	Black	36-46 mmHg	Open toe, petite length, extra wide calf								
Hosiery Mediven Plus RAL Compression closed toe length and width option	Class 3										
Mediven Plus Hosiery, CCL 3	Beige	36-46 mmHg	Closed toe	DT401CT/0	421-6032	421-6040	421-6065	421-6073	421-6081	421-6099	421-6107
Mediven Plus Hosiery, CCL 3	Beige	36-46 mmHg	Closed toe, petite length	DT402CT/5	421-6180	421-6198	421-6206	421-6214	421-6222	421-6230	421-6248
Mediven Plus Hosiery, CCL 3	Beige	36-46 mmHg	Closed toe, extra wide calf	Not Available							
Mediven Plus Hosiery, CCL 3	Beige	36-46 mmHg	Closed toe, petite length, extra wide calf	Not available							
Hosiery Mediven Plus RAL Compression closed toe length and width option	Class 3										
Mediven Plus Hosiery, CCL 3	Black	36-46 mmHg	Closed toe	DT401CT/5	421-6115	421-6123	421-6131	421-6149	421-6156	421-6164	421-6172
Mediven Plus Hosiery, CCL 3	Black	36-46 mmHg	Closed toe, petite length	DT402CT/0	421-6255	421-6263	421-6271	421-6289	421-6297	421-6305	421-6313
Mediven Plus Hosiery, CCL 3	Black	36-46 mmHg	Closed toe, extra wide	Not							

Mediven Plus Hosiery, CCL 3	Black	36-46 mmHg	calf Closed toe, petite length, extra wide calf	available							
Mediven Plus Circular Made To Measure (MTM)			Medi Code								
Mediven Plus Hosiery, CCL 1		18-21mmHg	DTPK1								
Mediven Plus Hosiery, CCL 2		23-32mmHg	DTPK2								
Mediven Plus Hosiery, CCL 3		36-46 mmHg	DTKP3								
Additional code for silicone tops			DTTB								
Mediven Mondi Made To Measure (MTM) Flat Knit			Medi Code								
Mediven Mondi Hosiery, CCL 1		18-21mmHg	DTMK1								
Mediven Mondi Hosiery, CCL 2		23-32mmHg	DTMT2								
Mediven Mondi Hosiery, CCL 3		36-46 mmHg	DTMTK3								
Code for additions											
Silicone tops			DTTB								
Zips			DTZIP								
Closed Toe			DTTOE								
"Y" knitting maps			DTYKM								

Ordering options availability	Contact details
1. Wholesalers	AAH, Alliance, Phoenix
2 Direct to manufacturer	N/A
3. Dispensing Appliance Contractor	Postal service Medilink Scotland, free post envelopes provided from Company
	<u>Contact: Lynda.douglas@mediuk.co.uk</u>

ActiLymph Hosiery Kits				
Product Hosiery Kit	Colour	Size	MPC	PIP Code
ActiLymph Hosiery Kit (1 Stocking + 2 Liners)	Sand/White	Medium	31790	374-6914
ActiLymph Hosiery Kit (1 Stocking + 2 Liners)	Sand/White	Large	31791	374-6922
ActiLymph Hosiery Kit (1 Stocking + 2 Liners)	Sand/White	Ex Large	31792	374-6930
ActiLymph Hosiery Kit (1 Stocking + 2 Liners)	Sand/White	Xtra Xtra Large	31793	374-6948
ActiLymph Hosiery Kit (1 Stocking + 2 Liners)	Black/Sand	Medium	32845	387-0763
ActiLymph Hosiery Kit (1 Stocking + 2 Liners)	Black/Sand	Large	32846	387-0771
ActiLymph Hosiery Kit (1 Stocking + 2 Liners)	Black/Sand	Ex Large	32847	387-0789
ActiLymph Hosiery Kit (1 Stocking + 2 Liners)	Black/Sand	Xtra Xtra Large	32848	387-0797
ReadyWrap Foot				
ReadyWrap Foot CT S Reg Left	Beige	S	141726	421-5596
ReadyWrap Foot CT S Reg Right	Beige	S	141727	421-5406
ReadyWrap Foot CT S Reg Left	Black	S	141728	421-5547
ReadyWrap Foot CT S Reg Right	Black	S	141729	421-5398
ReadyWrap Foot CT M Reg Left	Beige	M	141730	421-5588
ReadyWrap Foot CT M Reg Right	Beige	M	141731	421-5356
ReadyWrap Foot CT M Reg Left	Black	M	141732	421-5570
ReadyWrap Foot CT M Reg Right	Black	M	141733	421-5307
ReadyWrap Foot CT L Reg Left	Beige	L	141734	421-5562
ReadyWrap Foot CT L Reg Right	Beige	L	141735	421-5323
ReadyWrap Foot CT L Reg Left	Black	L	141736	421-5554
ReadyWrap Foot CT L Reg Right	Black	L	141737	421-5315
ReadyWrap Foot CT XL Reg Left	Beige	XL	141738	421-5299
ReadyWrap Foot CT XL Reg Right	Beige	XL	141739	421-8517
ReadyWrap Foot CT XL Reg Left	Black	XL	141740	421-5539
ReadyWrap Foot CT XL Reg Right	Black	XL	141741	421-5224
ReadyWrap Foot CT XXL Reg Left	Beige	XXL	141742	421-5521
ReadyWrap Foot CT XXL Reg Right	Black	XXL	141743	421-5216
ReadyWrap Foot CT XXL Reg Left	Black	XXL	141744	421-5604
ReadyWrap Foot CT XXL Reg Right	Black	XXL	141745	421-5349
ReadyWrap Foot CT S Long Left	Beige	S	141746	421-5240
ReadyWrap Foot CT S Long Right	Beige	S	141747	421-5281
ReadyWrap Foot CT S Long Left	Black	S	141748	421-5257
ReadyWrap Foot CT S Long Right	Black	S	141749	421-6008
ReadyWrap Foot CT M Long Left	Beige	M	141750	421-5265
ReadyWrap Foot CT M Long Right	Beige	M	141751	421-5273
ReadyWrap Foot CT M Long Left	Black	M	141752	421-5232
ReadyWrap Foot CT M Long Right	Black	M	141753	421-5208
ReadyWrap Foot CT L Long Left	Beige	L	141754	421-6412
ReadyWrap Foot CT L Long Right	Beige	L	141755	421-5414
ReadyWrap Foot CT L Long Left	Black	L	141756	421-5497
ReadyWrap Foot CT L Long Right	Black	L	141757	421-6404
ReadyWrap Foot CT XL Long Left	Beige	XL	141758	421-5471
ReadyWrap Foot CT XL Long Right	Beige	XL	141759	421-5430

ReadyWrap Foot CT XL Long Left	Black	XL	141760	421-5489
ReadyWrap Foot CT XL Long Right	Black	XL	141761	421-5448
ReadyWrap Foot CT XXL Long Left	Beige	XXL	141762	421-5505
ReadyWrap Foot CT XXL Long Right	Beige	XXL	141763	421-5455
ReadyWrap Foot CT XXL Long Left	Black	XXL	141764	421-5513
ReadyWrap Foot CT XXL Long Right	Black	XXL	141765	421-5463
ReadyWrap - Calf	Beige	Large, Average, 30cm	104442	389-9556
ReadyWrap - Calf	Black	Large, Average, 30cm	104443	389-9598
ReadyWrap - Calf	Beige	Large, Tall, 35cm	104444	389-9630
ReadyWrap - Calf	Black	Large, Tall, 35cm	104445	389-9671
ReadyWrap - Calf	Beige	Medium, Average, 30cm	104446	389-9549
ReadyWrap - Calf	Black	Medium, Average, 30cm	104447	389-9580
ReadyWrap - Calf	Beige	Medium, Tall, 35cm	104448	389-9622
ReadyWrap - Calf	Black	Medium, Tall, 35cm	104449	389-9663
ReadyWrap - Calf	Beige	Small, Average, 30cm	104450	389-9531
ReadyWrap - Calf	Black	Small, Average, 30cm	104451	389-9572
ReadyWrap - Calf	Beige	Small, Tall, 35cm	104452	389-9614
ReadyWrap - Calf	Black	Small, Tall, 35cm	104453	389-9655
ReadyWrap - Calf	Beige	X-Large, Average, 30cm	104454	389-9564
ReadyWrap - Calf	Black	X-Large, Average, 30cm	104455	389-9606
ReadyWrap - Calf	Beige	X-Large, Tall, 35cm	104456	389-9648
ReadyWrap - Calf	Black	X-Large, Tall, 35cm	104457	389-9689
ReadyWrap - Calf	Beige	XX-Large, Average, 30cm	104784	401-4676
ReadyWrap - Calf	Black	XX-Large, Average, 30cm	104785	401-4684
ReadyWrap - Calf	Beige	XX-Large,	104786	401-4692

		Tall, 35cm		
ReadyWrap - Calf	Black	XX-Large, Tall, 35cm	104787	401-4700
ReadyWrap Liners				
ReadyWrap Liner, Below Knee,	Black	S-L	149032	417-6764
ReadyWrap Liner, Below Knee	Black	XL-XXL	149033	417-6756
ReadyWrap Liner, Thigh high	Black	S-L	149034	417-6731
ReadyWrap Liner, Thigh high	Black	XL-XXL	149035	417-6749
Compression Bandage Kit				
Actico 2C (Two Component Leg Ulcer Kit Latex Free) [Standard]	N/A	18-25cm	31770	376-5203
Actico 2C (Two Component Leg Ulcer Kit Latex Free) [Large]	N/A	25-32cm	31771	376-5211
Actico 2C Comfort Layer (1)	N/A	10cm x 3.5m	31772	378-0699
Actico 2C Compression Layer (2)	N/A	10cm x 6m	31773	378-0707
Compression Bandages				
Actico Cohesive Short Stretch	N/A	4cm x 6m	88307	314-0860
Actico Cohesive Short Stretch	N/A	6cm x 6m	88308	314-0878
Actico Cohesive Short Stretch	N/A	8cm x 6m	88309	314-0886
Actico Cohesive Short Stretch	N/A	10cm x 6m	88310	271-5431
Actico Cohesive Short Stretch	N/A	12cm x 6m	88311	314-0894

Ordering options	Contact details
1. Wholesalers*	AAH, Alliance ,Phoenix
2. Direct from manufacturer	L&R Medical UK LTD. 1 Wellington Court, Lancaster Park, Needwood, Burton upon Trent, Staffordshire, DE13 9PS
	Customer Solutions Team
	CustomerSolutions@uk.LRMed.com
	08450 606 707 / 44 (0)1283 576800
3. Dispensing Appliance Contractor (DAC)	Daylong
	0800 195 0160
	Email: prescriptions@daylong.co.uk
	www.daylong.co.uk/prescriptions

*

Juzo Move						
Hosiery below knee						
Product hosiery Kit	Style	colour	Class		Size	Pip Code
Juzo Move class 1	closed toe short	almond	18-21mmHg		1	4200416
Juzo Move class 1	closed toe short	almond	18-21mmHg		2	4200440
Juzo Move class 1	closed toe short	almond	18-21mmHg		3	4200473
Juzo Move class 1	closed toe short	almond	18-21mmHg		4	4200481
Juzo Move class 1	closed toe short	almond	18-21 mmHg		5	4200499
Juzo Move class 1	closed toe short	almond	18-21mmHg		6	4200515
Juzo Move class 1	closed toe short	black pepper	18-21mmHg		1	4200523
Juzo Move class 1	closed toe short	black pepper	18-21mmHg		2	4200549
Juzo Move class 1	closed toe short	black pepper	18-21mmHg		3	4200556
Juzo Move class 1	closed toe short	black pepper	18-21mmHg		4	4200564
Juzo Move class 1	closed toe short	black pepper	18-21mmHg		5	4200598
Juzo Move class 1	closed toe short	black pepper	18-21mmHg		6	4200606
Juzo Move class 1	closed toe short	almond	18-21mmHg	silicone adhesive border	1	4200846
Juzo Move class 1	closed toe short	almond	18-21mmHg	silicone adhesive border	2	4200853
Juzo Move class 1	closed toe short	almond	18-21mmHg	silicone adhesive border	3	4200879
Juzo Move class 1	closed toe short	almond	18-21mmHg	silicone adhesive border	4	4200887
Juzo Move class 1	closed toe short	almond	18-21mmHg	silicone adhesive border	5	4200895
Juzo Move class 1	closed toe short	almond	18-21mmHg	silicone adhesive border	6	4200937
Juzo Move class 1	closed toe short	black pepper	18-21mmHg	silicone adhesive border	1	4200952
Juzo Move class 1	closed toe short	black pepper	18-21mmHg	silicone adhesive border	2	4200978
Juzo Move class 1	closed toe short	black pepper	18-21mmHg	silicone adhesive border	3	4200986
Juzo Move class 1	closed toe short	black pepper	18-21mmHg	silicone adhesive border	4	4201000
Juzo Move class 1	closed toe short	black pepper	18-21mmHg	silicone adhesive border	5	4201018
Juzo Move class 1	closed toe short	black pepper	18-21mmHg	silicone adhesive border	6	4201026
Juzo Move class 1	closed toe short	almond	18-21mmHg	silicone balance adhesive border	1	4200614

Juzo Move class 1	closed toe short	almond	18-21mmHg	silicone balance adhesive border	2	4200622
Juzo Move class 1	closed toe short	almond	18-21mmHg	silicone balance adhesive border	3	4200630
Juzo Move class 1	closed toe short	almond	18-21mmHg	silicone balance adhesive border	4	4200648
Juzo Move class 1	closed toe short	almond	18-21mmHg	silicone balance adhesive border	5	4200663
Juzo Move class 1	closed toe short	almond	18-21mmHg	silicone balance adhesive border	6	4200671
Juzo Move class 1	closed toe short	black pepper	18-21mmHg	silicone balance adhesive border	1	4200705
Juzo Move class 1	closed toe short	black pepper	18-21mmHg	silicone balance adhesive border	2	4200713
Juzo Move class 1	closed toe short	black pepper	18-21mmHg	silicone balance adhesive border	3	4200812
Juzo Move class 1	closed toe short	black pepper	18-21mmHg	silicone balance adhesive border	4	4200812
Juzo Move class 1	closed toe short	black pepper	18-21mmHg	silicone balance adhesive border	5	4200820
Juzo Move class 1	closed toe short	black pepper	18-21mmHg	silicone balance adhesive border	6	4200838
Juzo Move class 1	closed toe standard	almond	18-21mmHg		1	4200382
Juzo Move class 1	closed toe standard	almond	18-21mmHg		2	4200390
Juzo Move class 1	closed toe standard	almond	18-21mmHg		3	4200408
Juzo Move class 1	closed toe standard	almond	18-21mmHg		4	4200457
Juzo Move class 1	closed toe standard	almond	18-21mmHg		5	4200465
Juzo Move class 1	closed toe standard	almond	18-21mmHg		6	4200507
Juzo Move class 1	closed toe standard	black pepper	18-21mmHg		1	4200531
Juzo Move class 1	closed toe standard	black pepper	18-21mmHg		2	4200572
Juzo Move class 1	closed toe standard	black pepper	18-21mmHg		3	4200580
Juzo Move class 1	closed toe standard	black pepper	18-21mmHg		4	4200655
Juzo Move class 1	closed toe standard	black pepper	18-21mmHg		5	4200697

Juzo Move class 1	closed toe standard	black pepper	18-21mmHg		6	4200721
Juzo Move class 1	closed toe standard	almond	18-21mmHg	silicone adhesive border	1	4200945
Juzo Move class 1	closed toe standard	almond	18-21mmHg	silicone adhesive border	2	4200960
Juzo Move class 1	closed toe standard	almond	18-21mmHg	silicone adhesive border	3	4200994
Juzo Move class 1	closed toe standard	almond	18-21mmHg	silicone adhesive border	4	4201034
Juzo Move class 1	closed toe standard	almond	18-21mmHg	silicone adhesive border	5	4201042
Juzo Move class 1	closed toe standard	almond	18-21mmHg	silicone adhesive border	6	4201059
Juzo Move class 1	closed toe standard	black pepper	18-21mmHg	silicone adhesive border	1	4201067
Juzo Move class 1	closed toe standard	black pepper	18-21mmHg	silicone adhesive border	2	4201075
Juzo Move class 1	closed toe standard	black pepper	18-21mmHg	silicone adhesive border	3	4201083
Juzo Move class 1	closed toe standard	black pepper	18-21mmHg	silicone adhesive border	4	4201091
Juzo Move class 1	closed toe standard	black pepper	18-21mmHg	silicone adhesive border	5	4201109
Juzo Move class 1	closed toe standard	black pepper	18-21mmHg	silicone adhesive border	6	4201117
Juzo Move class 1	closed toe standard	almond	18-21mmHg	silicone balance adhesive border	1	4200689
Juzo Move class 1	closed toe standard	almond	18-21mmHg	silicone balance adhesive border	2	4200739
Juzo Move class 1	closed toe standard	almond	18-21mmHg	silicone balance adhesive border	3	4200754
Juzo Move class 1	closed toe standard	almond	18-21mmHg	silicone balance adhesive border	4	4200762
Juzo Move class 1	closed toe standard	almond	18-21mmHg	silicone balance adhesive border	5	4200770
Juzo Move class 1	closed toe standard	almond	18-21mmHg	silicone balance adhesive border	6	4200788
Juzo Move class 1	closed toe standard	black pepper	18-21mmHg	silicone balance adhesive border	1	4200796
Juzo Move class 1	closed toe standard	black pepper	18-21mmHg	silicone balance adhesive border	2	4200804
Juzo Move class 1	closed toe standard	black pepper	18-21mmHg	silicone balance adhesive border	3	4200861
Juzo Move class 1	closed toe standard	black pepper	18-21mmHg	silicone balance adhesive	4	4200903

				border		
Juzo Move class 1	closed toe standard	black pepper	18-21mmHg	silicone balance adhesive border	5	4200911
Juzo Move class 1	closed toe standard	black pepper	18-21mmHg	silicone balance adhesive border	6	4200929
Juzo Move class 1	open toe short	almond	18-21mmHg		1	4201125
Juzo Move class 1	open toe short	almond	18-21mmHg		2	4201133
Juzo Move class 1	open toe short	almond	18-21mmHg		3	4201174
Juzo Move class 1	open toe short	almond	18-21mmHg		4	4201273
Juzo Move class 1	open toe short	almond	18-21mmHg		5	4201349
Juzo Move class 1	open toe short	almond	18-21mmHg		6	4201356
Juzo Move class 1	open toe short	black pepper	18-21mmHg		1	4201372
Juzo Move class 1	open toe short	black pepper	18-21mmHg		2	4201398
Juzo Move class 1	open toe short	black pepper	18-21mmHg		3	4201414
Juzo Move class 1	open toe short	black pepper	18-21mmHg		4	4201422
Juzo Move class 1	open toe short	black pepper	18-21mmHg		5	4201463
Juzo Move class 1	open toe short	black pepper	18-21mmHg		6	4201471
Juzo Move class 1	open toe short	almond	18-21mmHg	silicone adhesive border	1	4201703
Juzo Move class 1	open toe short	almond	18-21mmHg	silicone adhesive border	2	4201711
Juzo Move class 1	open toe short	almond	18-21mmHg	silicone adhesive border	3	4201729
Juzo Move class 1	open toe short	almond	18-21mmHg	silicone adhesive border	4	4201737
Juzo Move class 1	open toe short	almond	18-21mmHg	silicone adhesive border	5	4201745
Juzo Move class 1	open toe short	almond	18-21mmHg	silicone adhesive border	6	4201752
Juzo Move class 1	open toe short	black pepper	18-21mmHg	silicone adhesive border	1	4201760
Juzo Move class 1	open toe short	black pepper	18-21mmHg	silicone adhesive border	2	4201778
Juzo Move class 1	open toe short	black pepper	18-21mmHg	silicone adhesive border	3	4201786
Juzo Move class 1	open toe short	black pepper	18-21mmHg	silicone adhesive border	4	4201794
Juzo Move class 1	open toe short	black pepper	18-21mmHg	silicone adhesive border	5	4201802
Juzo Move class 1	open toe short	black pepper	18-21mmHg	silicone adhesive border	6	4201810
Juzo Move class 1	open toe short	almond	18-21mmHg	silicone balance adhesive	1	4201497

				border		
Juzo Move class 1	open toe short	almond	18-21mmHg	silicone balance adhesive border	2	4201505
Juzo Move class 1	open toe short	almond	18-21mmHg	silicone balance adhesive border	3	4201539
Juzo Move class 1	open toe short	almond	18-21mmHg	silicone balance adhesive border	4	4201562
Juzo Move class 1	open toe short	almond	18-21mmHg	silicone balance adhesive border	5	4201604
Juzo Move class 1	open toe short	almond	18-21mmHg	silicone balance adhesive border	6	4201638
Juzo Move class 1	open toe short	black pepper	18-21mmHg	silicone balance adhesive border	1	4201646
Juzo Move class 1	open toe short	black pepper	18-21mmHg	silicone balance adhesive border	2	4201653
Juzo Move class 1	open toe short	black pepper	18-21mmHg	silicone balance adhesive border	3	4201661
Juzo Move class 1	open toe short	black pepper	18-21mmHg	silicone balance adhesive border	4	4201679
Juzo Move class 1	open toe short	black pepper	18-21mmHg	silicone balance adhesive border	5	4201687
Juzo Move class 1	open toe short	black pepper	18-21mmHg	silicone balance adhesive border	6	4201695
Juzo Move class 1	Closed toe standard	almond	18-21mmHg		1	4201141
Juzo Move class 1	closed toe standard	almond	18-21mmHg		2	4201158
Juzo Move class 1	closed toe standard	almond	18-21mmHg		3	4201166
Juzo Move class 1	closed toe standard	almond	18-21mmHg		4	4201208
Juzo Move class 1	closed toe standard	almond	18-21mmHg		5	4200366
Juzo Move class 1	closed toe standard	almond	18-21mmHg		6	4201182
Juzo Move class 1	closed toe standard	black pepper	18-21mmHg		1	4201190
Juzo Move class 1	closed toe standard	black pepper	18-21mmHg		2	4201216
Juzo Move class 1	closed toe standard	black pepper	18-21mmHg		3	4201224

Juzo Move class 1	closed toe standard	black pepper	18-21mmHg		4	4201240
Juzo Move class 1	closed toe standard	black pepper	18-21mmHg		5	4201265
Juzo Move class 1	closed toe standard	black pepper	18-21mmHg		6	4201281
Juzo Move class 1	closed toe standard	almond	18-21mmHg	silicone adhesive border	1	4201521
Juzo Move class 1	closed toe standard	almond	18-21mmHg	silicone adhesive border	2	4201547
Juzo Move class 1	closed toe standard	almond	18-21mmHg	silicone adhesive border	3	4201554
Juzo Move class 1	closed toe standard	almond	18-21mmHg	silicone adhesive border	4	4201570
Juzo Move class 1	closed toe standard	almond	18-21mmHg	silicone adhesive border	5	4201588
Juzo Move class 1	closed toe standard	almond	18-21mmHg	silicone adhesive border	6	4200358
Juzo Move class 1	closed toe standard	black pepper	18-21mmHg	silicone adhesive border	1	4201596
Juzo Move class 1	closed toe standard	black pepper	18-21mmHg	silicone adhesive border	2	4201612
Juzo Move class 1	closed toe standard	black pepper	18-21mmHg	silicone adhesive border	3	4201620
Juzo Move class 1	closed toe standard	black pepper	18-21mmHg	silicone adhesive border	4	4200424
Juzo Move class 1	closed toe standard	black pepper	18-21mmHg	silicone adhesive border	5	4200432
Juzo Move class 1	closed toe standard	black pepper	18-21mmHg	silicone adhesive border	6	4200374
Juzo Move class 1	open toe standard	almond	18-21mmHg	silicone balance adhesive border	1	4201307
Juzo Move class 1	open toe standard	almond	18-21mmHg	silicone balance adhesive border	2	4201315
Juzo Move class 1	open toe standard	almond	18-21mmHg	silicone balance adhesive border	3	4201323
Juzo Move class 1	open toe standard	almond	18-21mmHg	silicone balance adhesive border	4	4201331
Juzo Move class 1	open toe standard	almond	18-21mmHg	silicone balance adhesive border	5	4201364
Juzo Move class 1	open toe standard	almond	18-21mmHg	silicone balance adhesive border	6	4201380
Juzo Move class 1	open toe standard	black pepper	18-21mmHg	silicone balance adhesive border	1	4201406
Juzo Move class 1	open toe standard	black pepper	18-21mmHg	silicone balance adhesive border	2	4201430
Juzo Move class 1	open toe standard	black pepper	18-21mmHg	silicone balance adhesive	3	4201448

				border		
Juzo Move class 1	open toe standard	black pepper	18-21mmHg	silicone balance adhesive border	4	4201489
Juzo Move class 1	open toe standard	black pepper	18-21mmHg	silicone balance adhesive border	5	4201455
Juzo Move class 1	open toe standard	black pepper	18-21mmHg	silicone balance adhesive border	6	4201513
Juzo Move class 2	closed two short	almond	23-32mmHg		1	4201976
Juzo Move class 2	closed two short	almond	23-32mmHg		2	4201984
Juzo Move class 2	closed two short	almond	23-32mmHg		3	4201992
Juzo Move class 2	closed two short	almond	23-32mmHg		4	4202008
Juzo Move class 2	closed two short	almond	23-32mmHg		5	4202016
Juzo Move class 2	closed two short	almond	23-32mmHg		6	4202024
Juzo Move class 2	closed two short	black pepper	23-32mmHg		1	4202032
Juzo Move class 2	closed two short	black pepper	23-32mmHg		2	4202040
Juzo Move class 2	closed two short	black pepper	23-32mmHg		3	4202057
Juzo Move class 2	closed two short	black pepper	23-32mmHg		4	4202065
Juzo Move class 2	closed two short	black pepper	23-32mmHg		5	4202073
Juzo Move class 2	closed two short	black pepper	23-32mmHg		6	4202081
Juzo Move class 2	closed two short	almond	23-32mmHg	silicone adhesive border	1	4202602
Juzo Move class 2	closed two short	almond	23-32mmHg	silicone adhesive border	2	4202610
Juzo Move class 2	closed two short	almond	23-32mmHg	silicone adhesive border	3	4202628
Juzo Move class 2	closed two short	almond	23-32mmHg	silicone adhesive border	4	4202636
Juzo Move class 2	closed two short	almond	23-32mmHg	silicone adhesive border	5	4202644
Juzo Move class 2	closed two short	almond	23-32mmHg	silicone adhesive border	6	4202651
Juzo Move class 2	closed two short	black pepper	23-32mmHg	silicone adhesive border	1	4202669
Juzo Move class 2	closed two short	black pepper	23-32mmHg	silicone adhesive border	2	4202677
Juzo Move class 2	closed two short	black pepper	23-32mmHg	silicone adhesive border	3	4202685
Juzo Move class 2	closed two short	black pepper	23-32mmHg	silicone adhesive border	4	4202693
Juzo Move class 2	closed two short	black pepper	23-32mmHg	silicone adhesive border	5	4202701

Juzo Move class 2	closed two short	black pepper	23-32mmHg	silicone adhesive border	6	4202719
Juzo Move class 2	closed two short	almond	23-32mmHg	silicone balance adhesive border	1	4202727
Juzo Move class 2	closed two short	almond	23-32mmHg	silicone balance adhesive border	2	4202735
Juzo Move class 2	closed two short	almond	23-32mmHg	silicone balance adhesive border	3	4202743
Juzo Move class 2	closed two short	almond	23-32mmHg	silicone balance adhesive border	4	4202750
Juzo Move class 2	closed two short	almond	23-32mmHg	silicone balance adhesive border	5	4202768
Juzo Move class 2	closed two short	almond	23-32mmHg	silicone balance adhesive border	6	4202776
Juzo Move class 2	closed two short	black pepper	23-32mmHg	silicone balance adhesive border	1	4202784
Juzo Move class 2	closed two short	black pepper	23-32mmHg	silicone balance adhesive border	2	4202792
Juzo Move class 2	closed two short	black pepper	23-32mmHg	silicone balance adhesive border	3	4202800
Juzo Move class 2	closed two short	black pepper	23-32mmHg	silicone balance adhesive border	4	4202818
Juzo Move class 2	closed two short	black pepper	23-32mmHg	silicone balance adhesive border	5	4202826
Juzo Move class 2	closed two short	black pepper	23-32mmHg	silicone balance adhesive border	6	4202834
Juzo Move class 2	closed toe	almond	23-32mmHg		1	4201851
Juzo Move class 2	closed toe	almond	23-32mmHg		2	4201869
Juzo Move class 2	closed toe	almond	23-32mmHg		3	4201877
Juzo Move class 2	closed toe	almond	23-32mmHg		4	4201885
Juzo Move class 2	closed toe	almond	23-32mmHg		5	4201893
Juzo Move class 2	closed toe	almond	23-32mmHg		6	4201901
Juzo Move class 2	closed toe	black pepper	23-32mmHg		1	4201919
Juzo Move class 2	closed toe	black pepper	23-32mmHg		2	4201927

Juzo Move class 2	closed toe	black pepper	23-32mmHg		3	4201935
Juzo Move class 2	closed toe	black pepper	23-32mmHg		4	4201943
Juzo Move class 2	closed toe	black pepper	23-32mmHg		5	4201950
Juzo Move class 2	closed toe	black pepper	23-32mmHg		6	4201968
Juzo Move class 2	closed toe	almond	23-32mmHg	silicone adhesive border	1	4203584
Juzo Move class 2	closed toe	almond	23-32mmHg	silicone adhesive border	2	4203600
Juzo Move class 2	closed toe	almond	23-32mmHg	silicone adhesive border	3	4203618
Juzo Move class 2	closed toe	almond	23-32mmHg	silicone adhesive border	4	4203626
Juzo Move class 2	closed toe	almond	23-32mmHg	silicone adhesive border	5	4203634
Juzo Move class 2	closed toe	almond	23-32mmHg	silicone adhesive border	6	4203642
Juzo Move class 2	closed toe	black pepper	23-32mmHg	silicone adhesive border	1	4203659
Juzo Move class 2	closed toe	black pepper	23-32mmHg	silicone adhesive border	2	4203675
Juzo Move class 2	closed toe	black pepper	23-32mmHg	silicone adhesive border	3	4203683
Juzo Move class 2	closed toe	black pepper	23-32mmHg	silicone adhesive border	4	4203709
Juzo Move class 2	closed toe	black pepper	23-32mmHg	silicone adhesive border	5	4203717
Juzo Move class 2	closed toe	black pepper	23-32mmHg	silicone adhesive border	6	4203733
Juzo Move class 2	closed toe	almond	23-32mmHg	silicone balance adhesive border	1	4203444
Juzo Move class 2	closed toe	almond	23-32mmHg	silicone balance adhesive border	2	4203451
Juzo Move class 2	closed toe	almond	23-32mmHg	silicone balance adhesive border	3	4203469
Juzo Move class 2	closed toe	almond	23-32mmHg	silicone balance adhesive border	4	4203477
Juzo Move class 2	closed toe	almond	23-32mmHg	silicone balance adhesive border	5	4203485
Juzo Move class 2	closed toe	almond	23-32mmHg	silicone balance adhesive border	6	4203493
Juzo Move class 2	closed toe	black pepper	23-32mmHg	silicone balance adhesive border	1	4203501
Juzo Move class 2	closed toe	black pepper	23-32mmHg	silicone balance adhesive border	2	4203519

Juzo Move class 2	closed toe	black pepper	23-32mmHg	silicone balance adhesive border	3	4203527
Juzo Move class 2	closed toe	black pepper	23-32mmHg	silicone balance adhesive border	4	4203535
Juzo Move class 2	closed toe	black pepper	23-32mmHg	silicone balance adhesive border	5	4203543
Juzo Move class 2	closed toe	black pepper	23-32mmHg	silicone balance adhesive border	6	4203550
Juzo Move class 2	open toe standard	almond	23-32mmHg		1	4202172
Juzo Move class 2	open toe standard	almond	23-32mmHg		2	4202180
Juzo Move class 2	open toe standard	almond	23-32mmHg		3	4202198
Juzo Move class 2	open toe standard	almond	23-32mmHg		4	4202206
Juzo Move class 2	open toe standard	almond	23-32mmHg		5	4202214
Juzo Move class 2	open toe standard	almond	23-32mmHg		6	4202222
Juzo Move class 2	open toe standard	black pepper	23-32mmHg		1	4202230
Juzo Move class 2	open toe standard	black pepper	23-32mmHg		2	4202248
Juzo Move class 2	open toe standard	black pepper	23-32mmHg		3	4202255
Juzo Move class 2	open toe standard	black pepper	23-32mmHg		4	4202263
Juzo Move class 2	open toe standard	black pepper	23-32mmHg		5	4202271
Juzo Move class 2	open toe standard	black pepper	23-32mmHg		6	4202289
Juzo Move class 2	open toe standard	almond	23-32mmHg	silicone adhesive border	1	4205589
Juzo Move class 2	open toe standard	almond	23-32mmHg	silicone adhesive border	2	4205605
Juzo Move class 2	open toe standard	almond	23-32mmHg	silicone adhesive border	3	4205647
Juzo Move class 2	open toe standard	almond	23-32mmHg	silicone adhesive border	4	4205670
Juzo Move class 2	open toe standard	almond	23-32mmHg	silicone adhesive border	5	4205688
Juzo Move class 2	open toe standard	almond	23-32mmHg	silicone adhesive border	6	4205712
Juzo Move class 2	open toe standard	black pepper	23-32mmHg	silicone adhesive border	1	4205738
Juzo Move class 2	open toe standard	black pepper	23-32mmHg	silicone adhesive border	2	4205753
Juzo Move class 2	closed toe standard	black pepper	23-32mmHg	silicone adhesive border	3	4205761
Juzo Move class 2	closed toe standard	black pepper	23-32mmHg	silicone adhesive border	4	4205787
Juzo Move class 2	closed toe standard	black pepper	23-32mmHg	silicone adhesive border	5	4205811

Juzo Move class 2	closed toe standard	black pepper	23-32mmHg	silicone adhesive border	6	4205837
Juzo Move class 2	open toe standard	almond	23-32mmHg	silicone balance adhesive border	1	4205340
Juzo Move class 2	open toe standard	almond	23-32mmHg	silicone balance adhesive border	2	4205365
Juzo Move class 2	open toe standard	almond	23-32mmHg	silicone balance adhesive border	3	4205399
Juzo Move class 2	open toe standard	almond	23-32mmHg	silicone balance adhesive border	4	4205407
Juzo Move class 2	open toe standard	almond	23-32mmHg	silicone balance adhesive border	5	4205415
Juzo Move class 2	open toe standard	almond	23-32mmHg	silicone balance adhesive border	6	4205423
Juzo Move class 2	open toe standard	black pepper	23-32mmHg	silicone balance adhesive border	1	4205431
Juzo Move class 2	open toe standard	black pepper	23-32mmHg	silicone balance adhesive border	2	4205449
Juzo Move class 2	open toe standard	black pepper	23-32mmHg	silicone balance adhesive border	3	4205456
Juzo Move class 2	open toe standard	black pepper	23-32mmHg	silicone balance adhesive border	4	4205464
Juzo Move class 2	open toe standard	black pepper	23-32mmHg	silicone balance adhesive border	5	4205472
Juzo Move class 2	open toe standard	black pepper	23-32mmHg	silicone balance adhesive border	6	4205498
Juzo Move class 2	open toe standard	almond	23-32mmHg		1	4202172
Juzo Move class 2	closed toe standard	almond	23-32mmHg		2	4202180
Juzo Move class 2	closed toe standard	almond	23-32mmHg		3	4202198
Juzo Move class 2	closed toe standard	almond	23-32mmHg		4	4202206
Juzo Move class 2	closed toe standard	almond	23-32mmHg		5	4202214
Juzo Move class 2	closed toe standard	almond	23-32mmHg		6	4202222
Juzo Move class 2	closed toe standard	black pepper	23-32mmHg		1	4202230
Juzo Move class 2	open toe standard	black pepper	23-32mmHg		2	4202248

Juzo Move class 2	closed toe standard	black pepper	23-32mmHg		3	4202255
Juzo Move class 2	closed toe standard	black pepper	23-32mmHg		4	4202263
Juzo Move class 2	closed toe standard	black pepper	23-32mmHg		5	4202271
Juzo Move class 2	closed toe standard	black pepper	23-32mmHg		6	4202289
Juzo Move class 2	closed toe standard	almond	23-32mmHg	silicone adhesive border	1	4205589
Juzo Move class 2	closed toe standard	almond	23-32mmHg	silicone adhesive border	2	4205605
Juzo Move class 2	open toe standard	almond	23-32mmHg	silicone adhesive border	3	4205647
Juzo Move class 2	open toe standard	almond	23-32mmHg	silicone adhesive border	4	4205670
Juzo Move class 2	open toe standard	almond	23-32mmHg	silicone adhesive border	5	4205688
Juzo Move class 2	open toe standard	almond	23-32mmHg	silicone adhesive border	6	4205712
Juzo Move class 2	open toe standard	black pepper	23-32mmHg	silicone adhesive border	1	4205738
Juzo Move class 2	open toe standard	black pepper	23-32mmHg	silicone adhesive border	2	4205753
Juzo Move class 2	open toe standard	black pepper	23-32mmHg	silicone adhesive border	3	4205761
Juzo Move class 2	open toe standard	black pepper	23-32mmHg	silicone adhesive border	4	4205787
Juzo Move class 2	open toe standard	black pepper	23-32mmHg	silicone adhesive border	5	4205811
Juzo Move class 2	open toe standard	black pepper	23-32mmHg	silicone adhesive border	6	4205837
Juzo Move class 2	open toe standard	almond	23-32mmHg	silicone balance adhesive border	1	4205340
Juzo Move class 2	open toe standard	almond	23-32mmHg	silicone balance adhesive border	2	4205365
Juzo Move class 2	open toe standard	almond	23-32mmHg	silicone balance adhesive border	3	4205399
Juzo Move class 2	open toe standard	almond	23-32mmHg	silicone balance adhesive border	4	4205407
Juzo Move class 2	open toe standard	almond	23-32mmHg	silicone balance adhesive border	5	4205415
Juzo Move class 2	open toe standard	almond	23-32mmHg	silicone balance adhesive border	6	4205423
Juzo Move class 2	open toe standard	black pepper	23-32mmHg	silicone balance adhesive border	1	4205431
Juzo Move class 2	open toe standard	black pepper	23-32mmHg	silicone balance adhesive border	2	4205449

Juzo Move class 2	open toe standard	black pepper	23-32mmHg	silicone balance adhesive border	3	4205456
Juzo Move class 2	open toe standard	black pepper	23-32mmHg	silicone balance adhesive border	4	4205464
Juzo Move class 2	open toe standard	black pepper	23-32mmHg	silicone balance adhesive border	5	4205472
Juzo Move class 2	open toe standard	black pepper	23-32mmHg	silicone balance adhesive border	6	4205498

Ordering options availability	Contact details		
1. Wholesalers	Alliance, Phoenix, NuCare	NuCare	
2. Direct to manufacturer	Juzo Customer Service International		
	Phone: +49 (0)8251 901 300		
	E-mail:order@juzo.com		
3. Dispensing Appliance Contractor (DAC)	Daylong	Tel: 0800 195 0160	
		Prescriptions@daylong.co.uk	www.daylong.co.uk/prescriptions

3M

Product	Colour	Size	Ref	Pip code
Coban 2 full compression kit	N/A	Standard	2094	322-3062
Coban 2 Lite compression kit	N/A	Standard	2794E	355-1439
Coban 2 Compression XL Kit	N/A	XL	2094XL	409-8158

Ordering options availability	Contact details	
1.wholesalers*	AAH, Alliance, Phoenix	
2. Direct from manufacturer	Tel:01509 611611	www.3M.co.uk/healthcare
	3M United Kingdom PLC	
	3M House	
	Morley Street	
	Loughborough	
	Leicestershire	
	LE1 11EP	

Smith & Nephew

Product	Size	Pack content	S&N Code	Pip code
Profore #3	10cmx3.5m	12	66000778	322-2726
Profore #4	10cmx 3.5m	12	66000779	322-2734

Ordering options availability	Contact details		
1.Wholesalers	Alliance, NWOS, Phoenix		
2.N/A			
3.Dispensing Appliance Contractors	Daylong, Tel 0800 195 0160	prescriptions@daylong.co.uk	www.daylong.co.uk/prescriptions